

EIU Ensemble Audition Excerpts

Trumpet

Fall 2024

Chromatic Scale:

- Full range
- Slur ascending, tongue descending

Etude & Excerpts:

- **Concone** - Etude No. 33, complete
- **Britten** – Young Person’s Guide to the Orchestra
- **Copland** – Appalachian Spring
- **Hindemith** – Symphony in B-flat
- **Mussorgsky/Ravel** – Pictures at an Exhibition, Promenade

- **Sightreading will be provided**

Prepare all #33

Andante

33

9

16

23

30

37

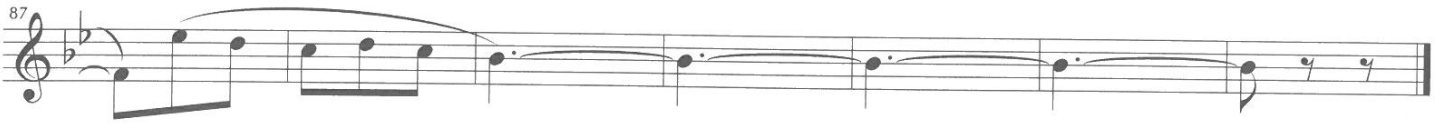
44

51

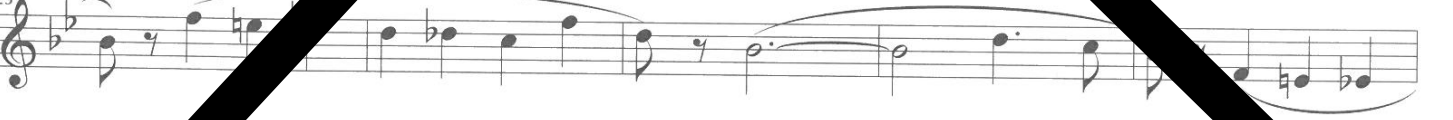
59

66

73



Moderato



The Young Person's Guide to the Orchestra

Trumpet 1 in C

Benjamin Britten

Variation K (trumpets)

stacc. sempre

Vivace

Side drum

pp *cresc.*

f

dim. dim.

pp

f

dim.

(senza cresc.)

f *ff*

(Repeat ad lib.)

Appalachian Spring

Aaron Copland

Tromba 1 in Bb

62 *Doppio movimento*
f *vigoroso e marc.*

63
sf

64 *a trifle slower* *Broadly (in 2)*
p *fff* *marc.*

66

67 *Moderato*
sf *p* *pp*

Symphony in B flat

I

Paul Hindemith

1 Moderately fast, with vigor (♩ 88-92)

5

8

A

The image shows the first three staves of a musical score. The first staff begins with a treble clef, a 3/2 time signature, and a forte (f) dynamic marking. It contains measures 1 through 4, featuring a melodic line with a triplet of eighth notes and various accidentals. The second staff contains measures 5 through 7, continuing the melodic development with a triplet of eighth notes and a key signature change to one sharp. The third staff contains measures 8 through 11, ending with a circled letter 'A' above the final measure. The score includes various musical notations such as slurs, accents, and dynamic markings.

Tableau d'une Exposition

(Pictures at an Exhibition)

Orchestration by Maurice Ravel

I. Promenade

Trumpet 1 in C

Modest Petrowitsch Moussorgsky

allegro giusto, nel modo russo; senza allegrezza, ma poco sostenuto

The musical score for Trumpet 1 in C, titled "I. Promenade" from "Tableau d'une Exposition" by Modest Petrowitsch Moussorgsky, as orchestrated by Maurice Ravel. The score is written in treble clef and begins with a dynamic marking of *f*. The tempo and mood are indicated as *allegro giusto, nel modo russo; senza allegrezza, ma poco sostenuto*. The piece is in a key signature of one flat (B-flat major/D minor). The score consists of five staves of music, each with a different time signature: 5/4, 6/4, 5/4, 6/4, and 5/4. The music features a variety of rhythmic patterns, including eighth and sixteenth notes, and rests. There are five numbered first endings (1-5) marked with boxes. The score concludes with a double bar line.