

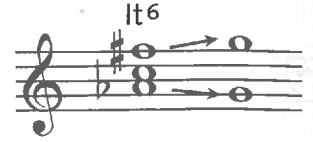
The Italian Sixth Chord

The Italian sixth (iv_6^\sharp) sounds like a dominant seventh chord with the fifth omitted. Its origin is a minor chord built on the subdominant, with a raised root. To find an Italian sixth chord, build a dominant seventh chord on the lowered sixth scale degree and remove the fifth from the chord. (The tonic is often doubled.) Then respell the top note of the chord enharmonically to form the interval of an augmented sixth. The interval of the augmented sixth usually resolves to the dominant.

Key of C:



Dominant seventh chord built on lowered sixth (5th omitted)



Top note respelled as augmented sixth, resolving to dominant

Playing a Chord Progression That Uses an Italian Sixth Chord

Play the chord progression that uses an Italian sixth chord.

21-9

Chord	Fingering (Right Hand)	Bass Note	Label
C	5 2 1	5	I
F	5 3 1	2	IV
C	5 2 1	5	I
It6	5 2 1	1	iv_6^\sharp
C/G	5 2 1	2	I_6^4
G7	4 2 1	1	V7
C	5 2 1	5	I

Practice the above progression in the following keys:

21-10

1. G major

21-12

3. D major

21-11

2. F major

21-13

4. B \flat major