



ILLINOIS HIGHER
EDUCATION
C E N T E R

for alcohol, other drug
& violence prevention

2010 Illinois CORE Alcohol and Drug Survey Key Results



ILLINOIS HIGHER
EDUCATION
C E N T E R

for alcohol, other drug
& violence prevention

BACKGROUND



Administration Protocol

- All institutions of higher education were invited to participate – Fall 2009
- Invitation packets sent to Presidents, announcements through list-serves
- Informational Meeting at December Affiliates Meeting



Administration Protocol

- Schools were allowed option of CORE Long Form or Community College Form
- Schools were allowed option of paper or electronic administration
- Schools were asked to collect surveys between February 1 – May 1



ILLINOIS HIGHER
EDUCATION
C E N T E R

for alcohol, other drug
& violence prevention

DEMOGRAPHIC



Demographics - Institutions

- 29 institutions participated
- 23 bachelors and master's level institutions, and 6 community colleges participated



Demographics

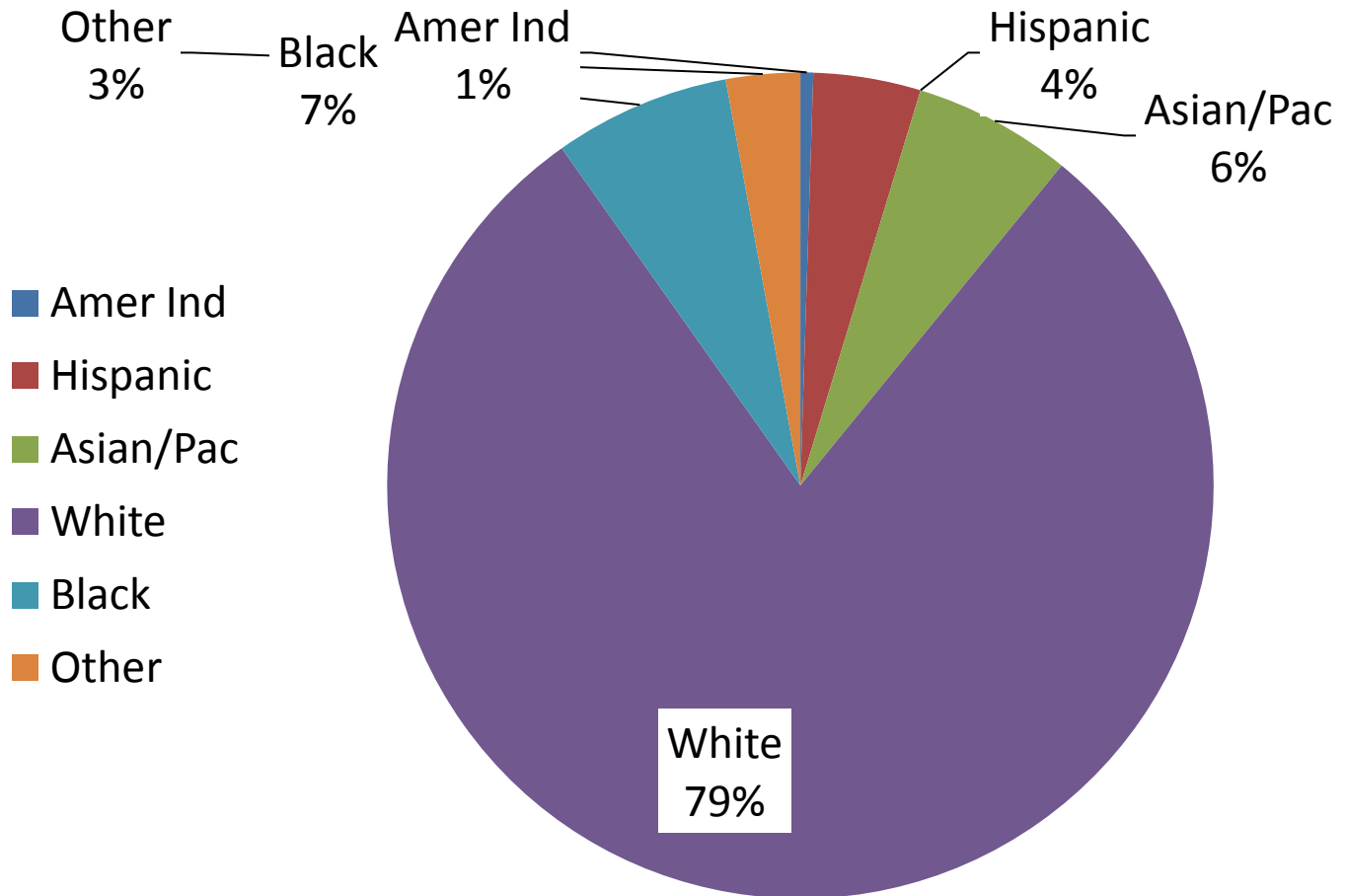
- 16,267 individual students participated
- 3,101 students from community colleges
- 9,070 from 4-year Bachelor's Degree Granting Institutions
- 4,096 from 4-year Master's Degree Granting Institutions



ILLINOIS HIGHER
EDUCATION
C E N T E R

for alcohol, other drug
& violence prevention

Demographics - Ethnicity

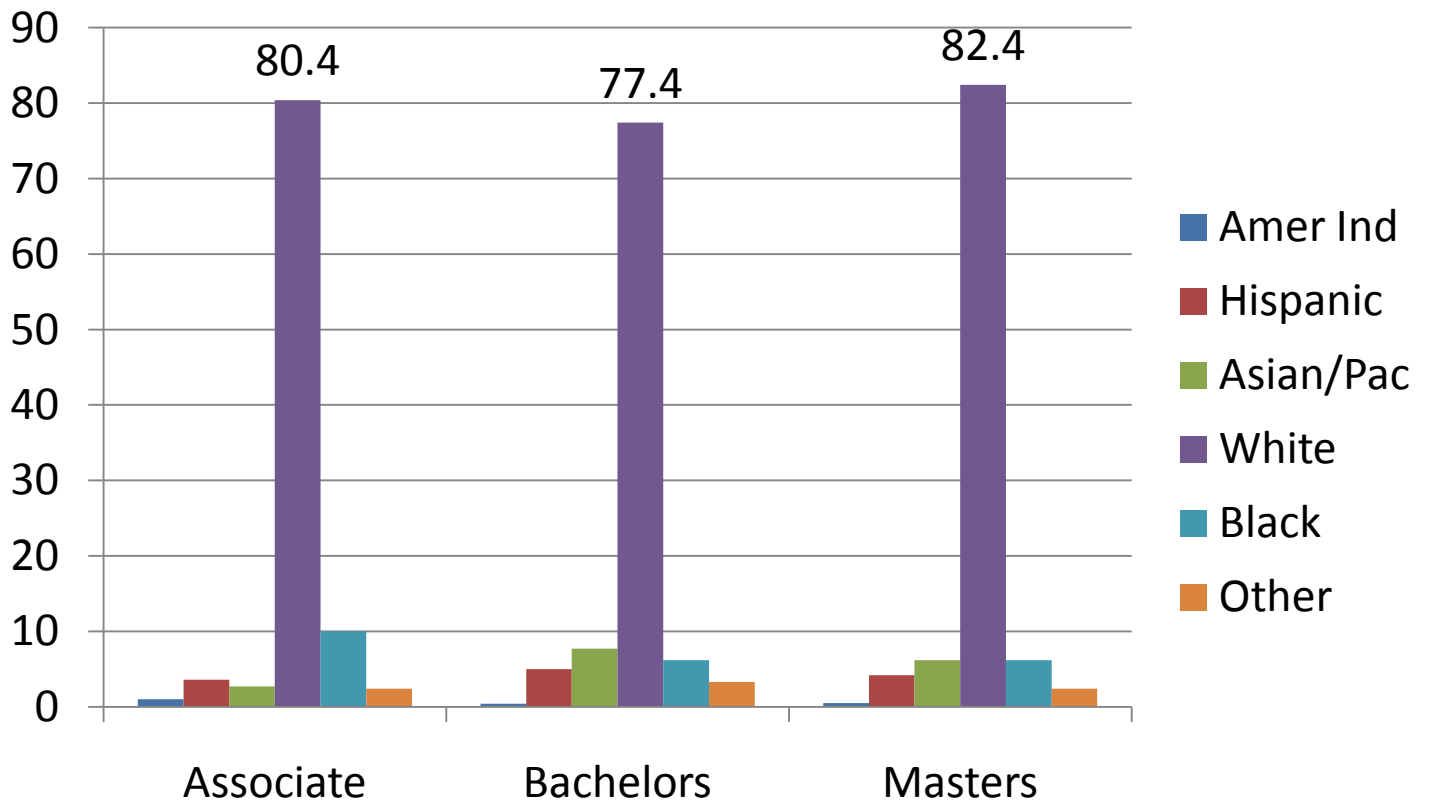




ILLINOIS HIGHER
EDUCATION
C E N T E R

for alcohol, other drug
& violence prevention

Ethnicity by Institution Type

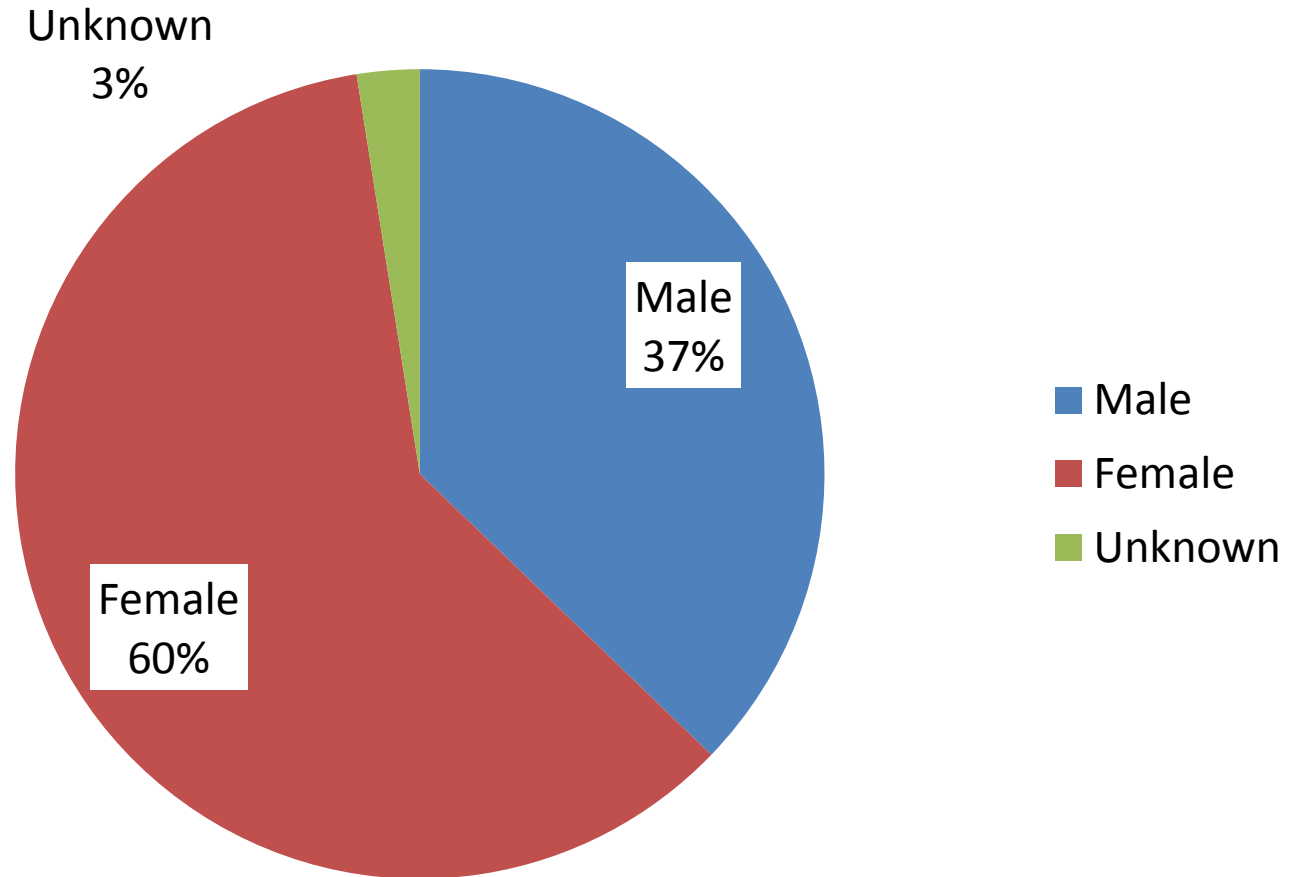




ILLINOIS HIGHER
EDUCATION
C E N T E R

for alcohol, other drug
& violence prevention

Demographics - Gender

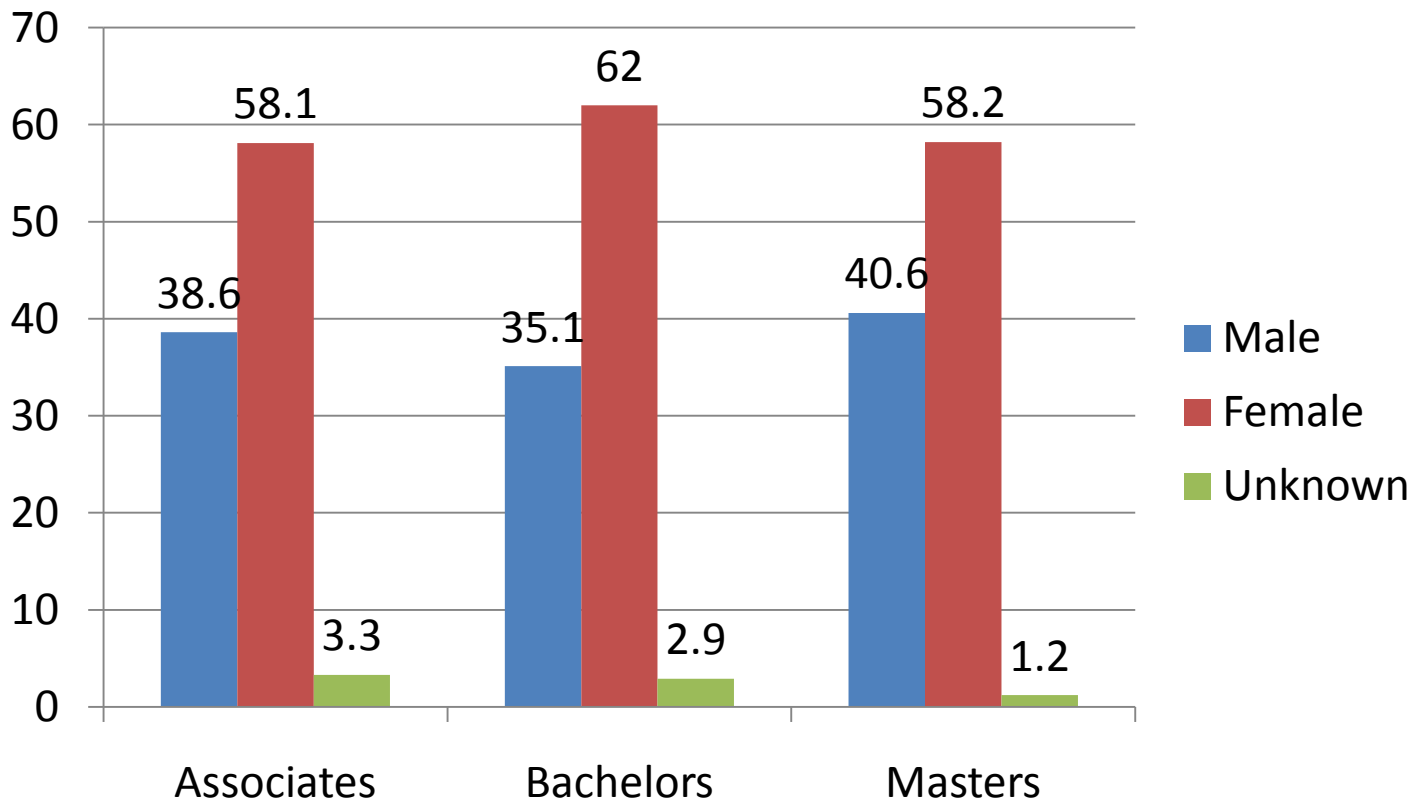




ILLINOIS HIGHER
EDUCATION
CENTER

for alcohol, other drug
& violence prevention

Gender by Institution Type





ILLINOIS HIGHER
EDUCATION
C E N T E R

for alcohol, other drug
& violence prevention

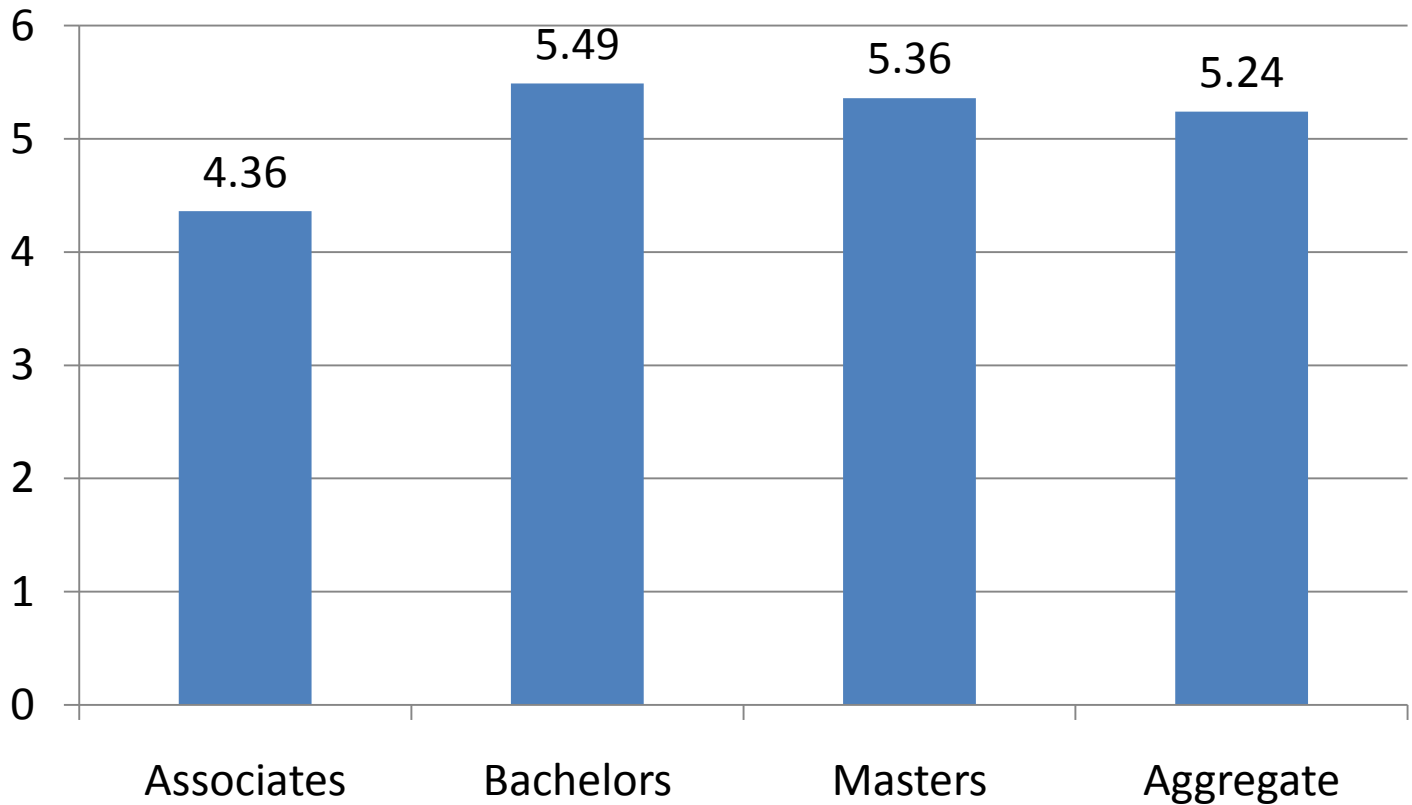
General Results



ILLINOIS HIGHER
EDUCATION
C E N T E R

for alcohol, other drug
& violence prevention

Average # of Drinks Per Week*

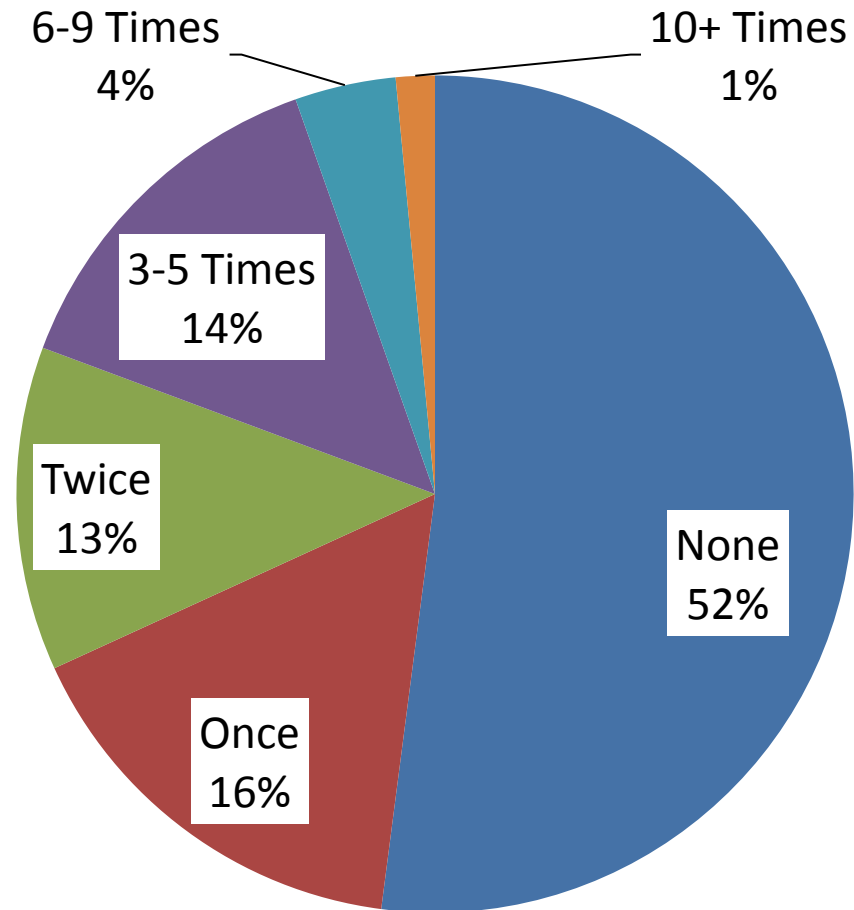




ILLINOIS HIGHER
EDUCATION
C E N T E R

for alcohol, other drug
& violence prevention

Binge Drinking



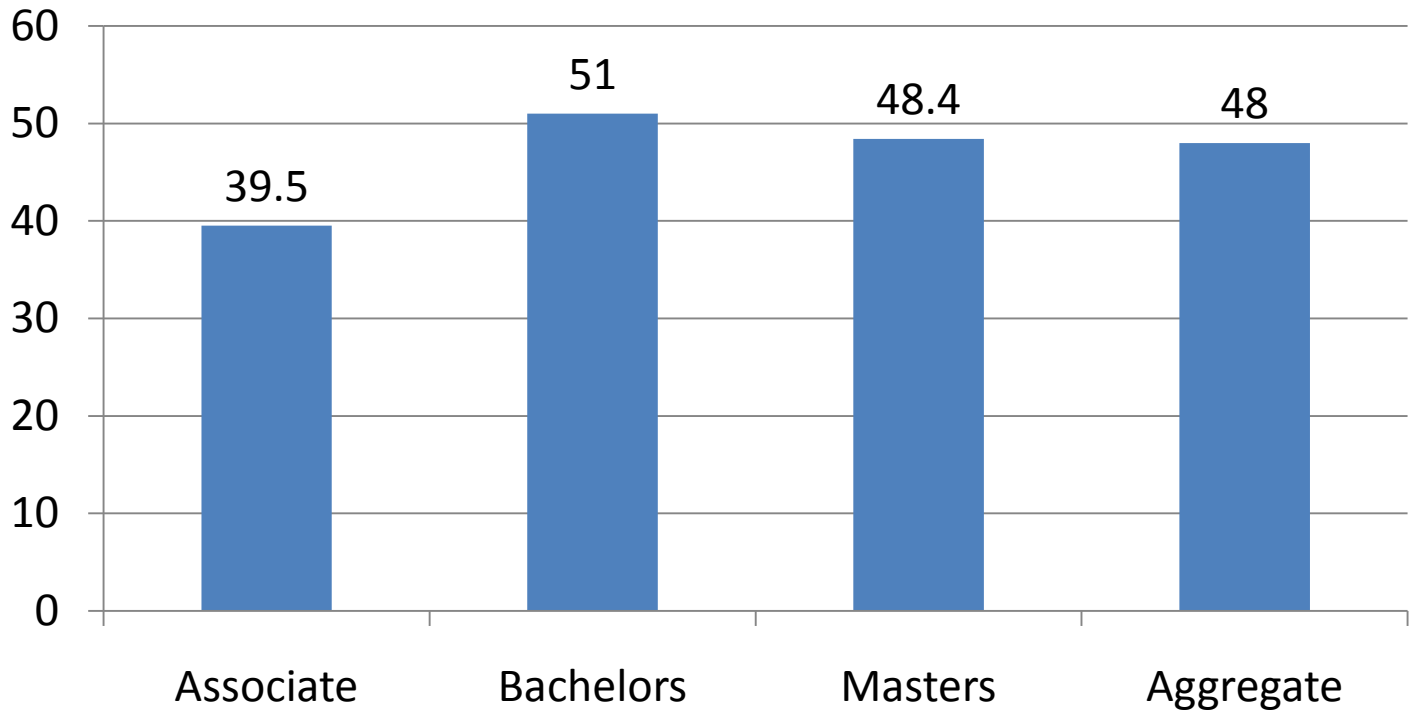


ILLINOIS HIGHER
EDUCATION
CENTER

for alcohol, other drug
& violence prevention

Binge Drinking By Institution Type*

Series 1



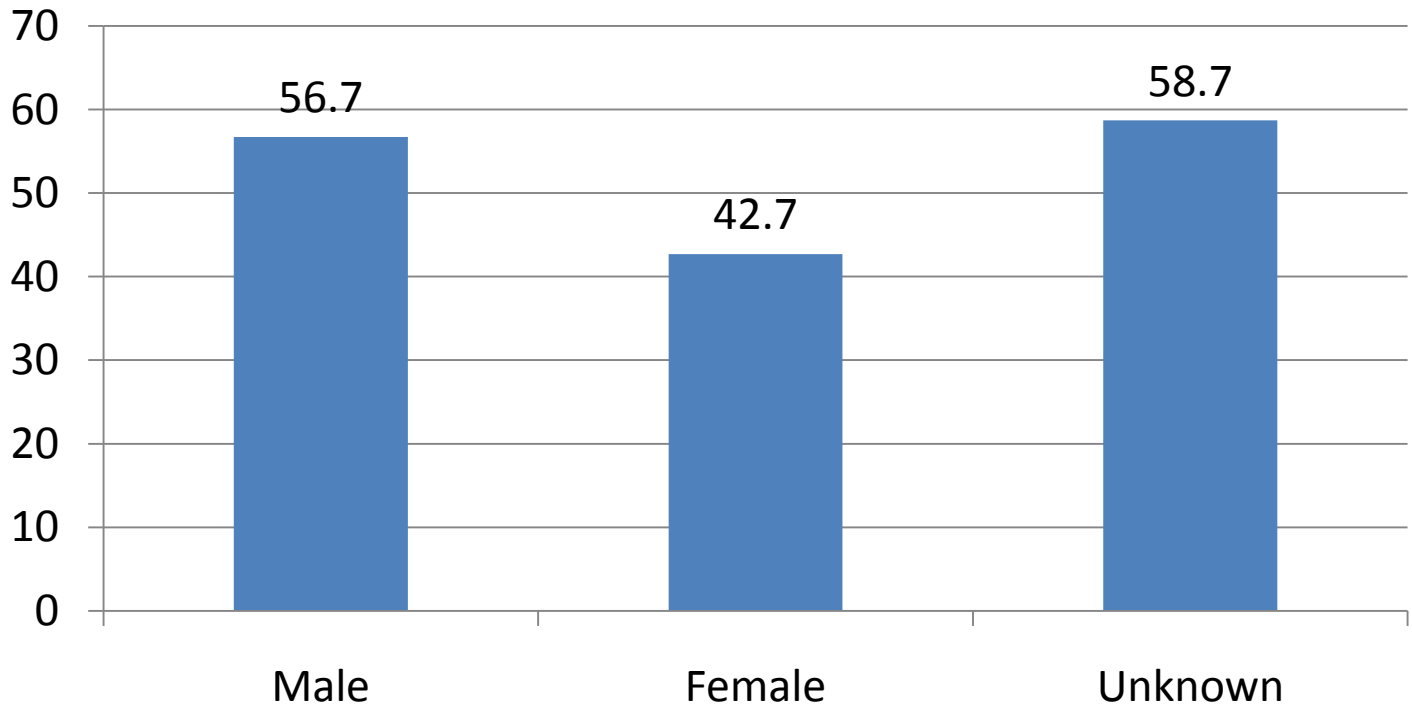


ILLINOIS HIGHER
EDUCATION
CENTER

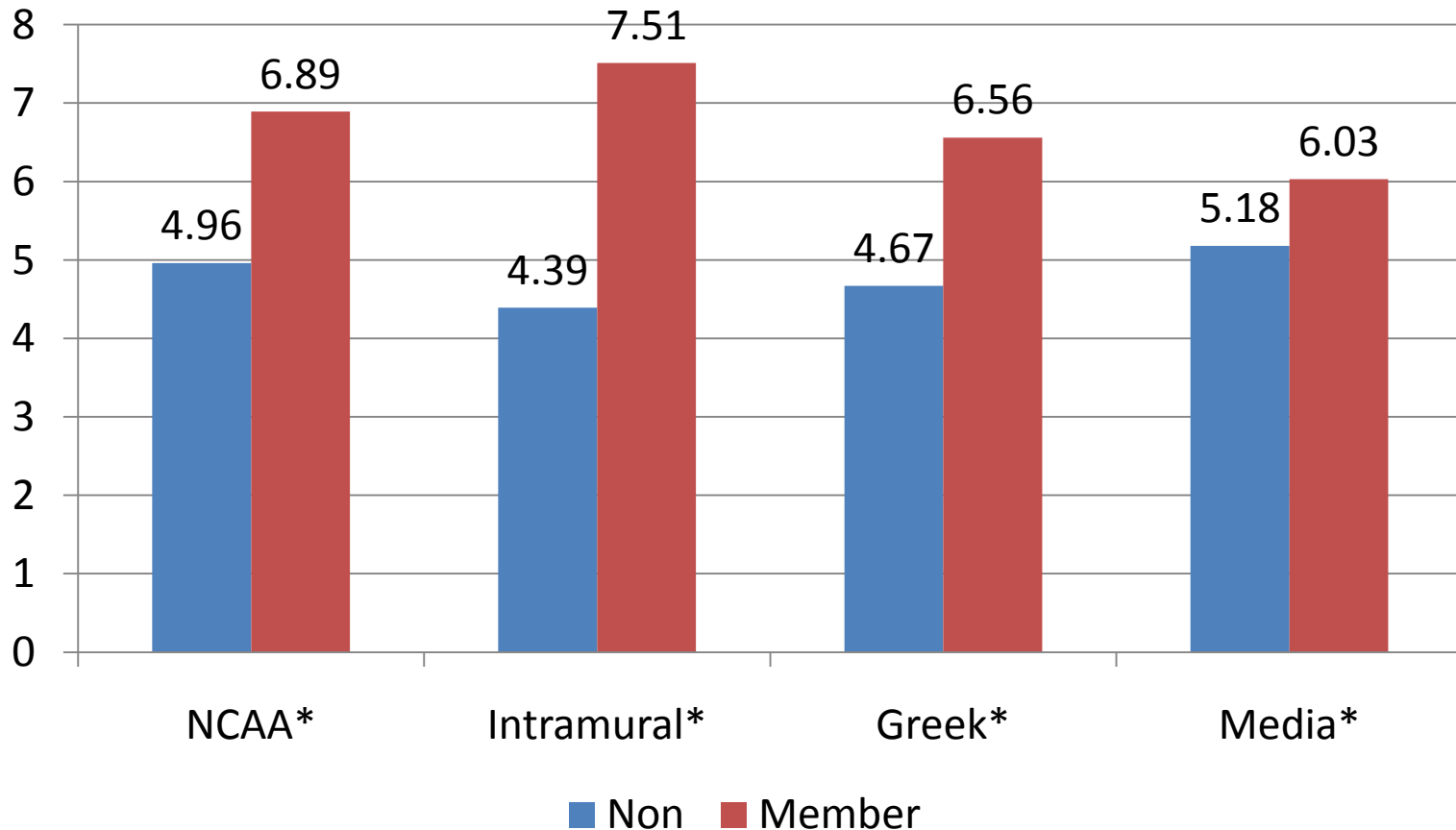
for alcohol, other drug
& violence prevention

Binge Drinking by Gender*

Series 1

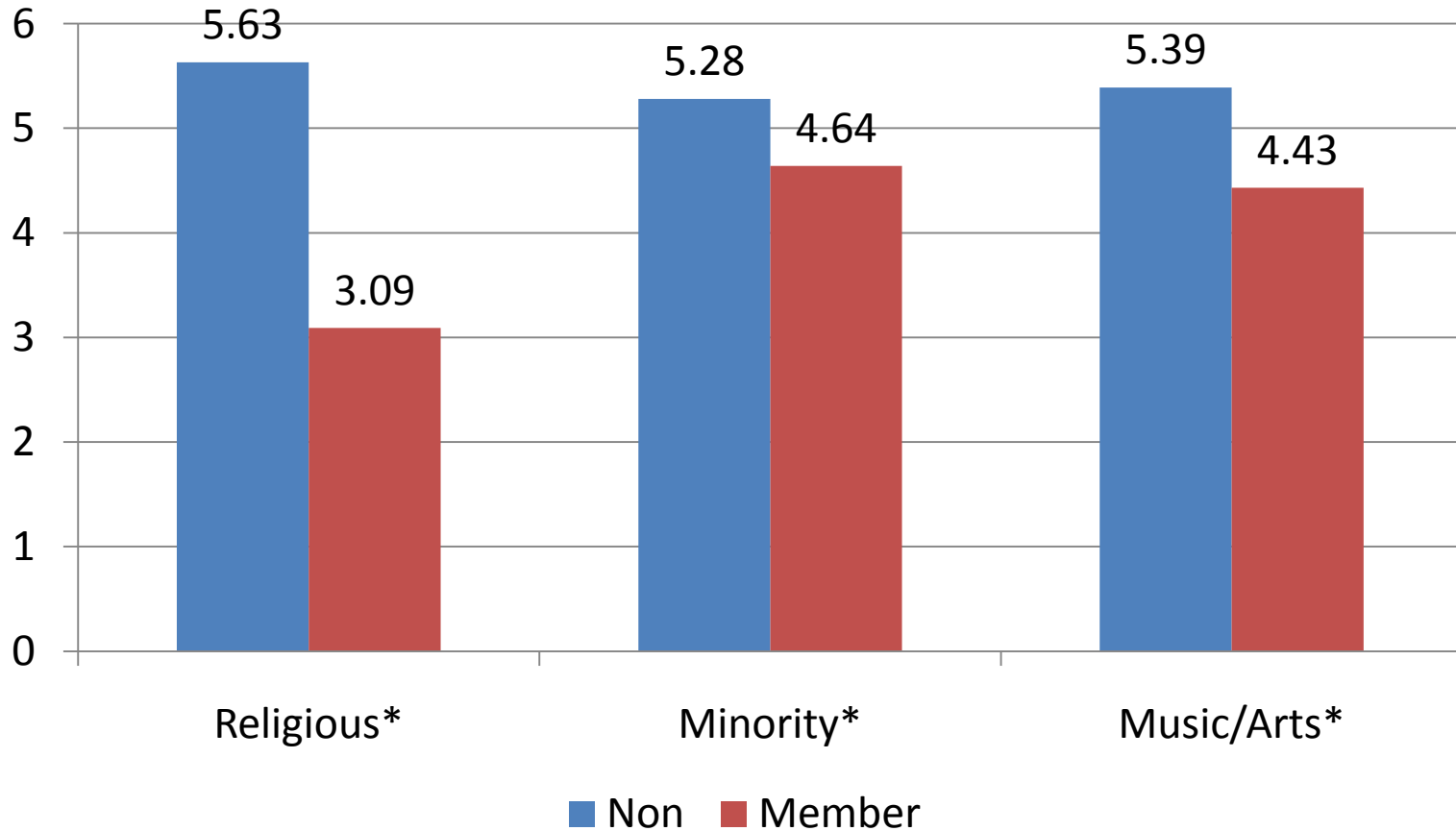


Ave. Drinks / Week by Group Affiliation – Risk*





Ave. Drinks / Week by Group Affiliation – Protective*

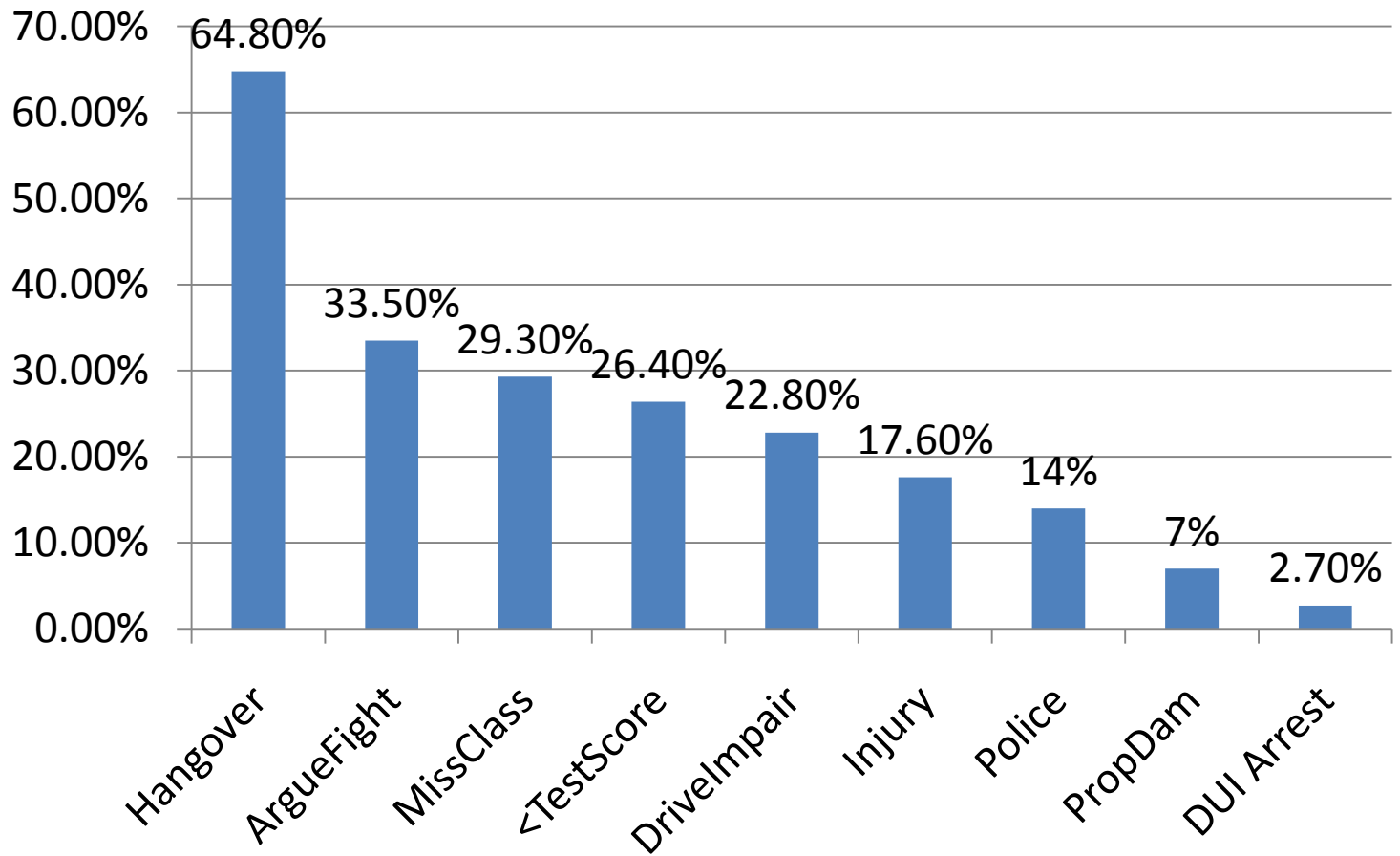




ILLINOIS HIGHER
EDUCATION
C E N T E R

for alcohol, other drug
& violence prevention

Negative Consequences





ILLINOIS HIGHER
EDUCATION
C E N T E R

for alcohol, other drug
& violence prevention

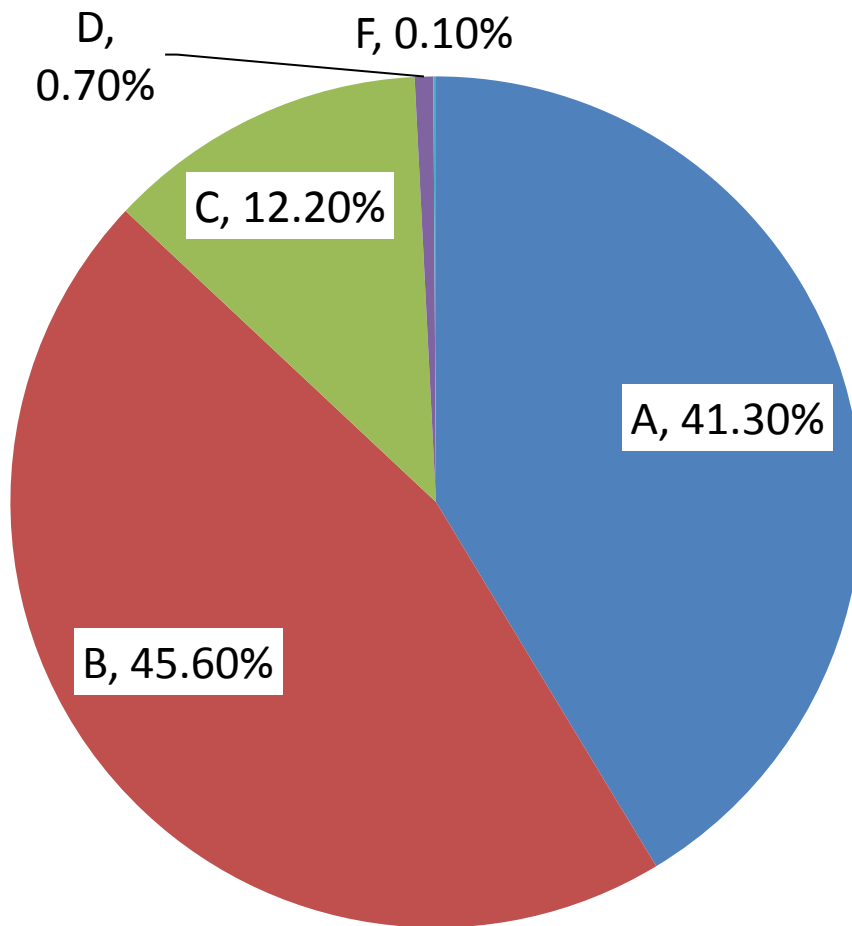
Data Related to Reported Grade and Alcohol



ILLINOIS HIGHER
EDUCATION
C E N T E R

for alcohol, other drug
& violence prevention

Reported Grade

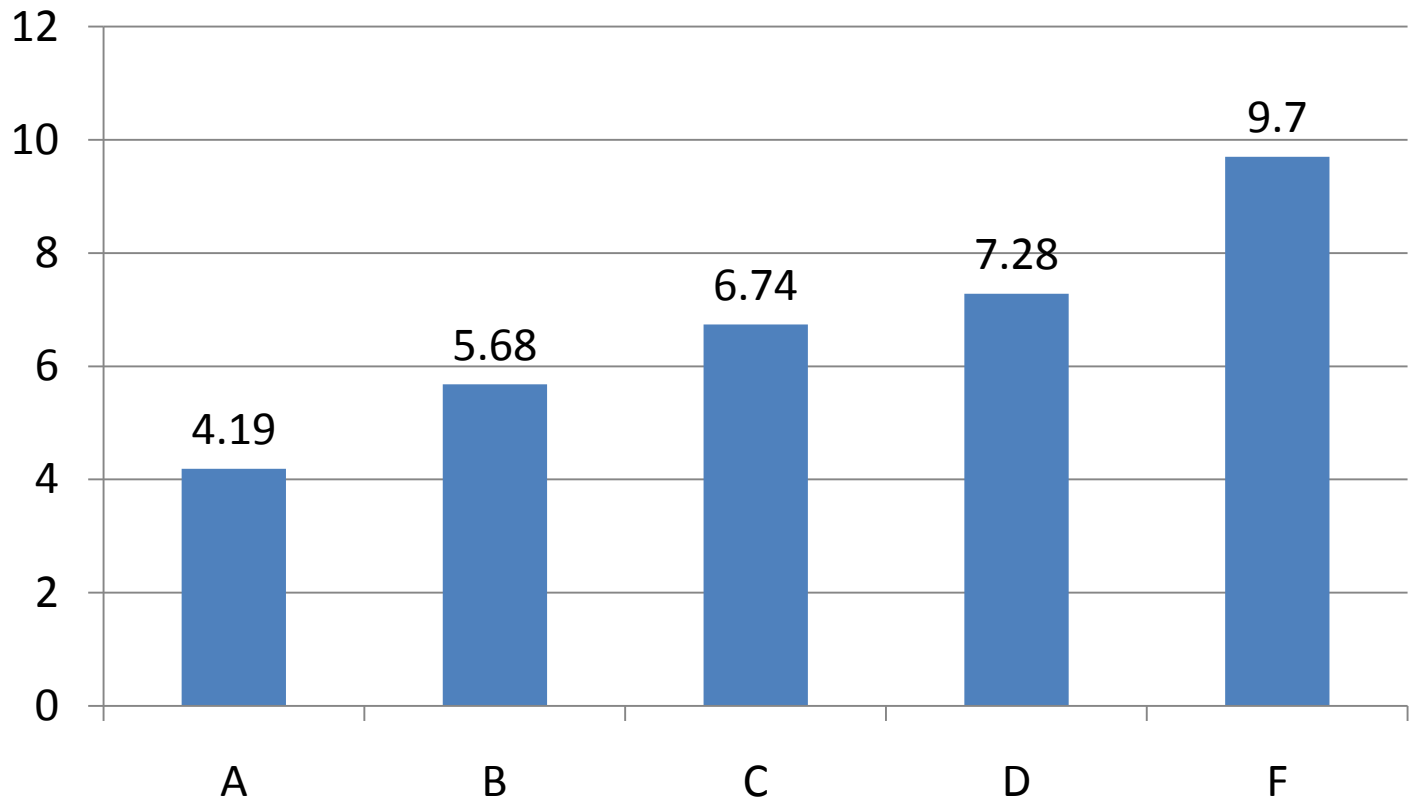




ILLINOIS HIGHER
EDUCATION
C E N T E R

for alcohol, other drug
& violence prevention

Reported Grade and Drinks / Week

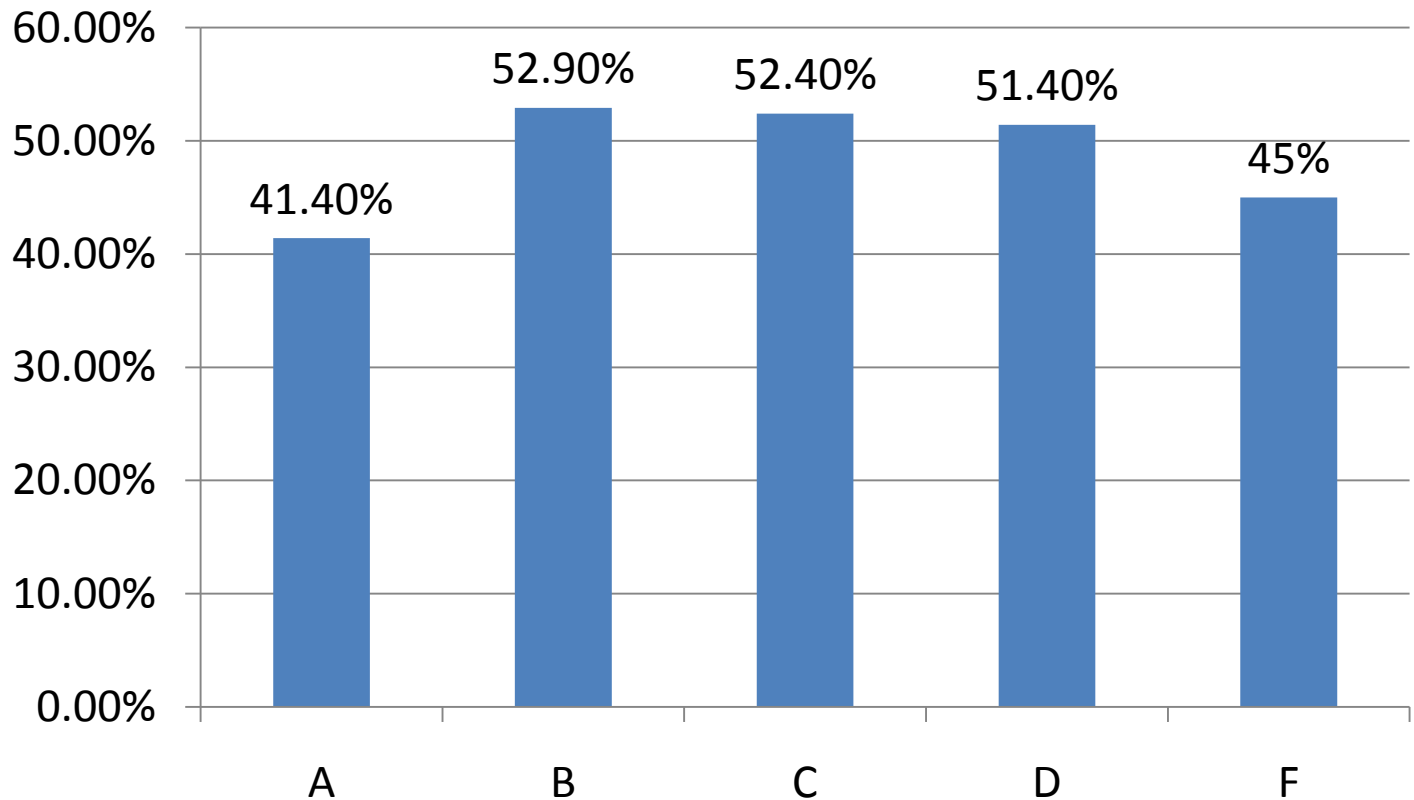




ILLINOIS HIGHER
EDUCATION
C E N T E R

for alcohol, other drug
& violence prevention

Reported Grade and Binge Drinking

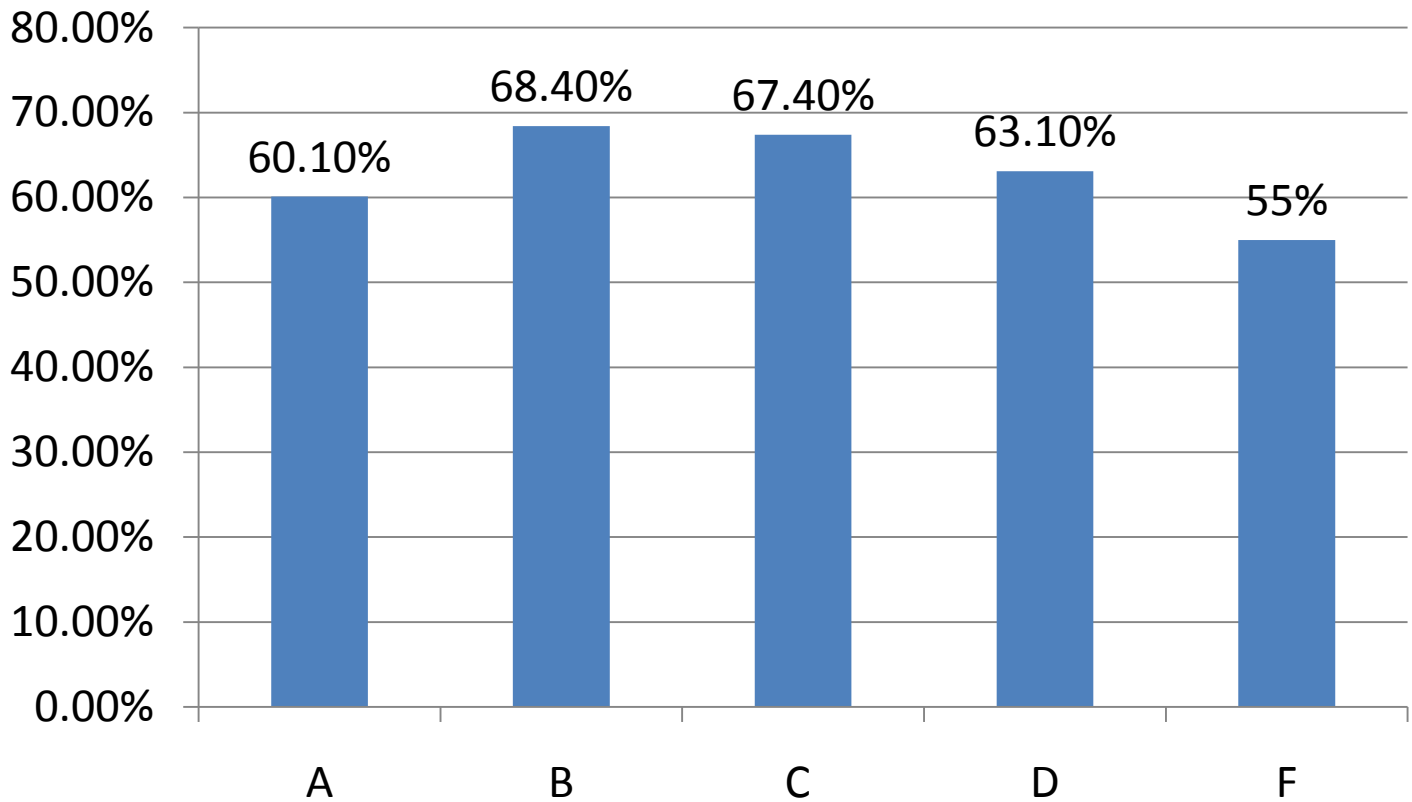




ILLINOIS HIGHER
EDUCATION
C E N T E R

for alcohol, other drug
& violence prevention

Reported Grade and Hangover*

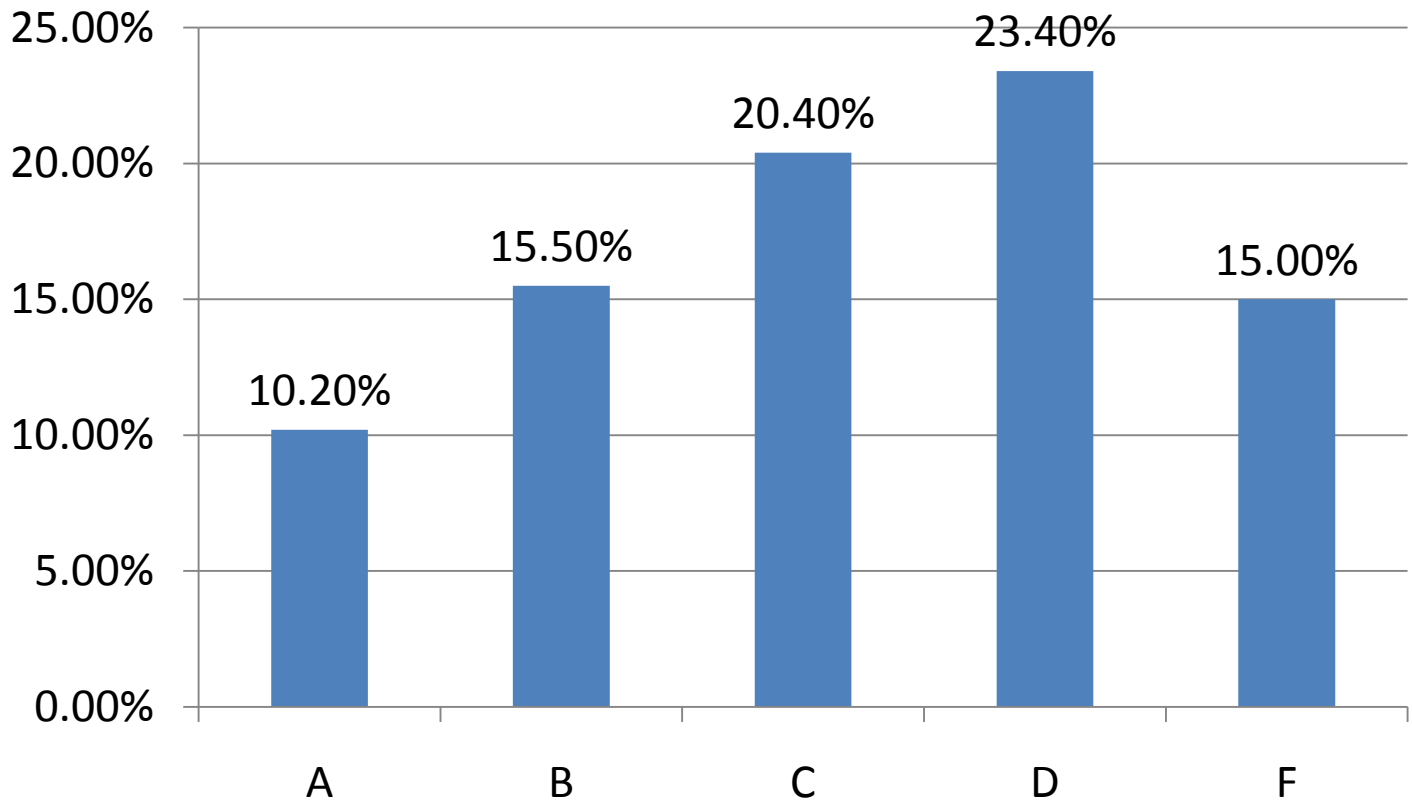




ILLINOIS HIGHER
EDUCATION
C E N T E R

for alcohol, other drug
& violence prevention

Reported Grade and Lower Test Scores*

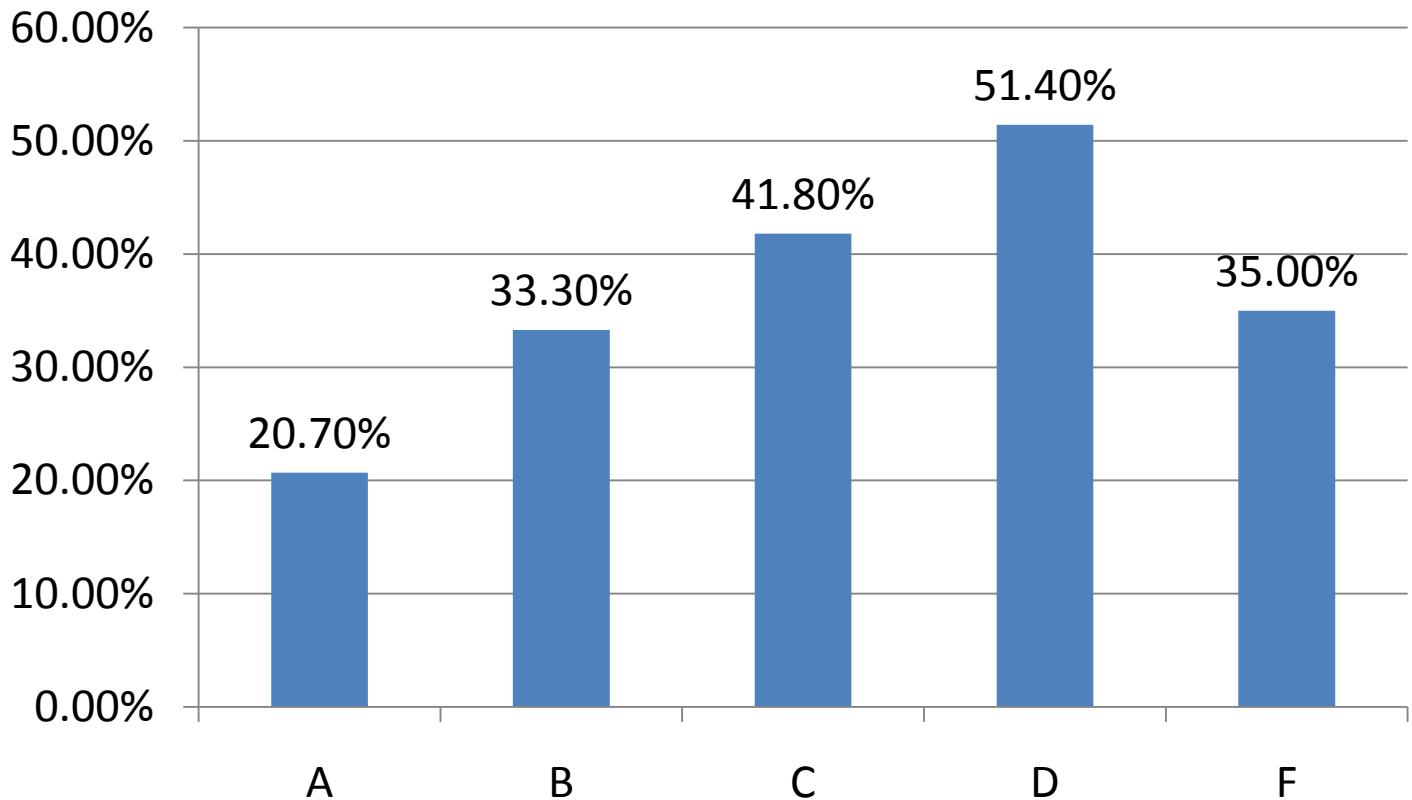




ILLINOIS HIGHER
EDUCATION
CENTER

for alcohol, other drug
& violence prevention

Reported Grade and Missed Class*

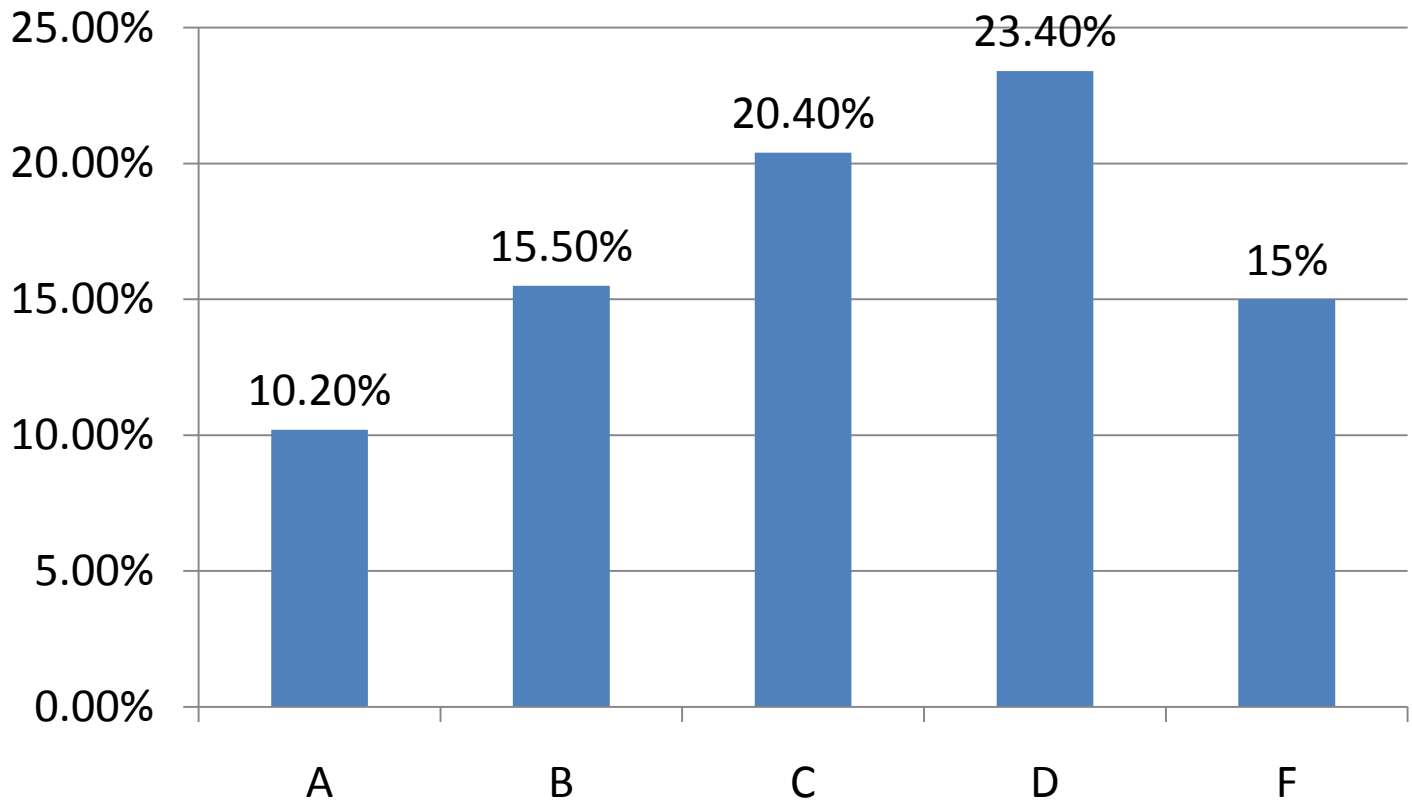




ILLINOIS HIGHER
EDUCATION
C E N T E R

for alcohol, other drug
& violence prevention

Reported Grade and Trouble with Police*

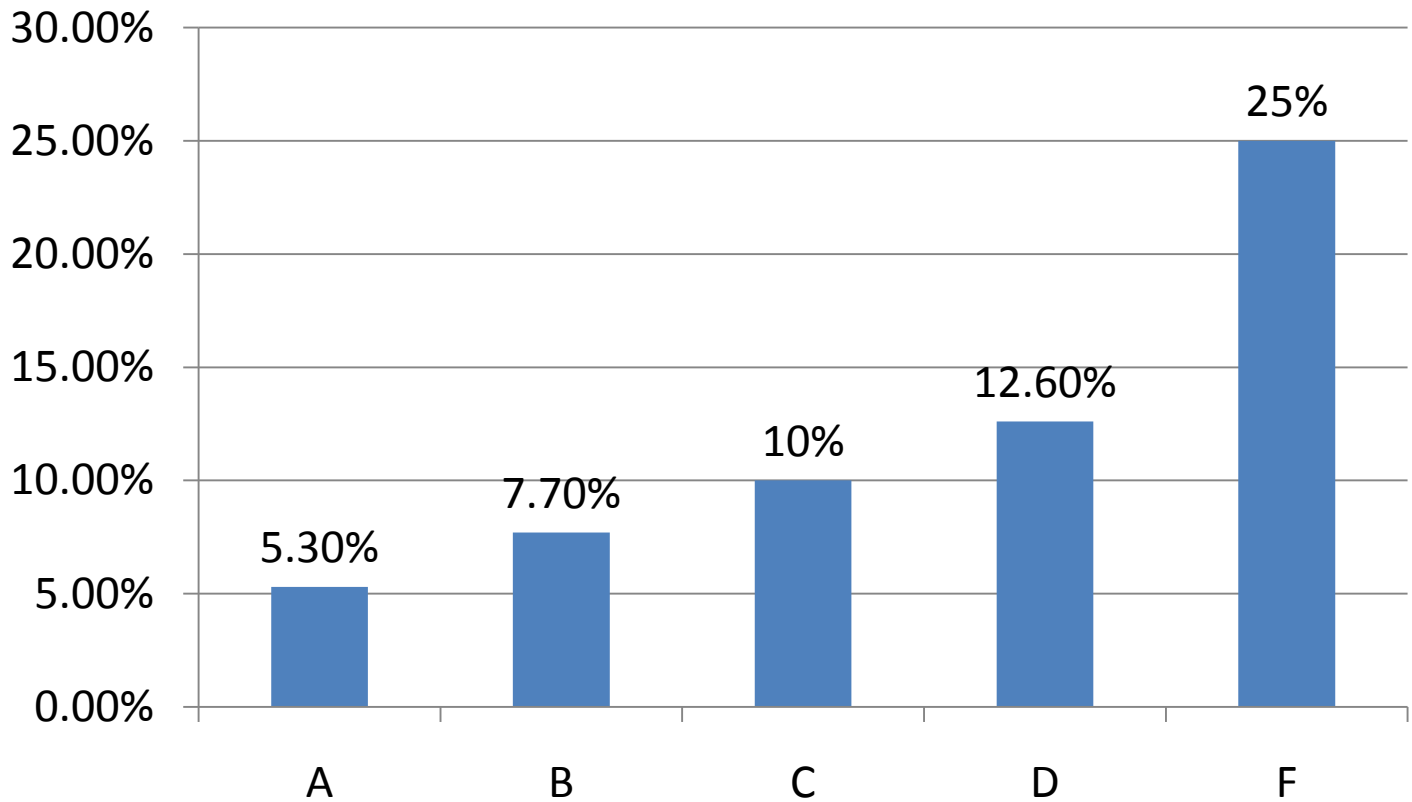




ILLINOIS HIGHER
EDUCATION
C E N T E R

for alcohol, other drug
& violence prevention

Reported Grade and Property Damage*

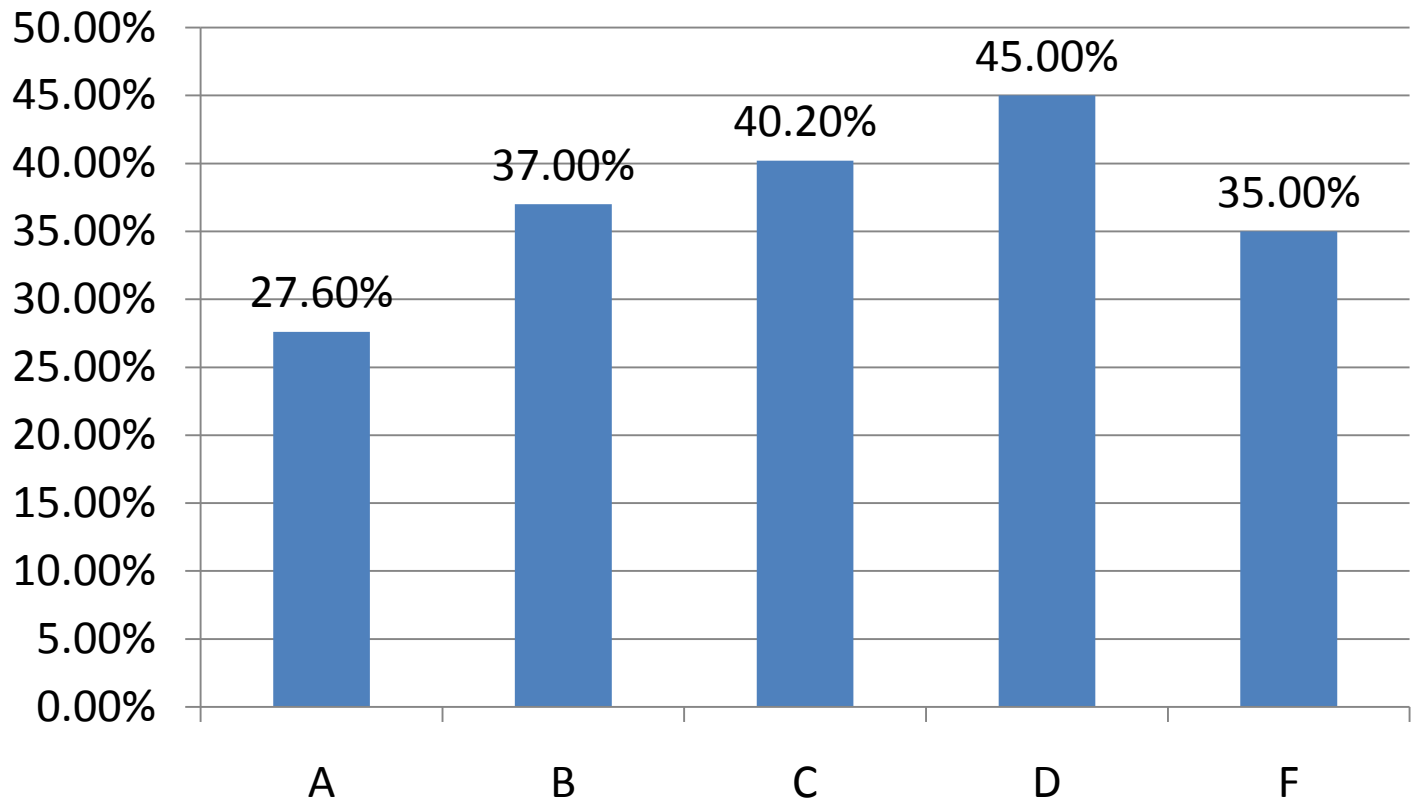




ILLINOIS HIGHER
EDUCATION
C E N T E R

for alcohol, other drug
& violence prevention

Reported Grade and Argument/Fights*

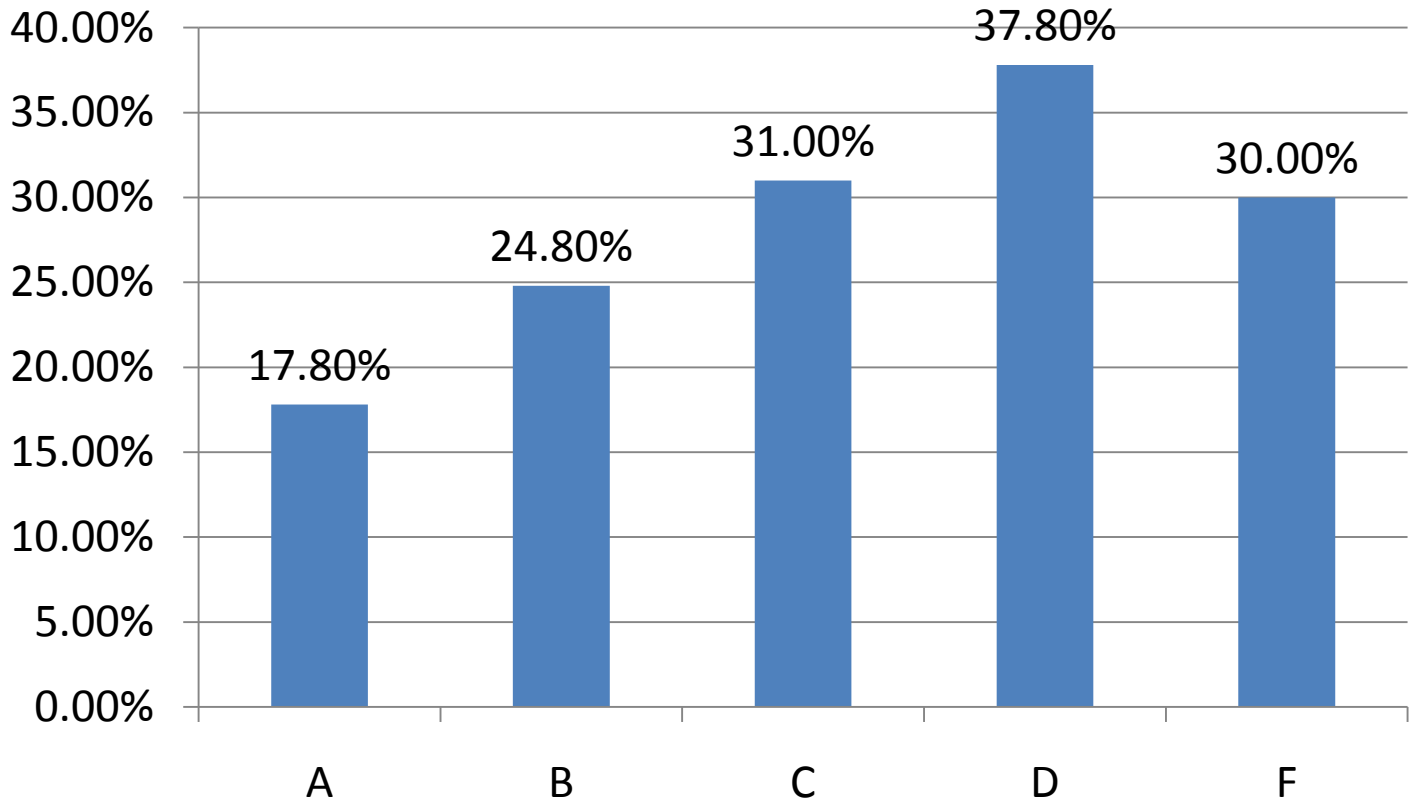




ILLINOIS HIGHER
EDUCATION
C E N T E R

for alcohol, other drug
& violence prevention

Reported Grade and Driving Impaired*

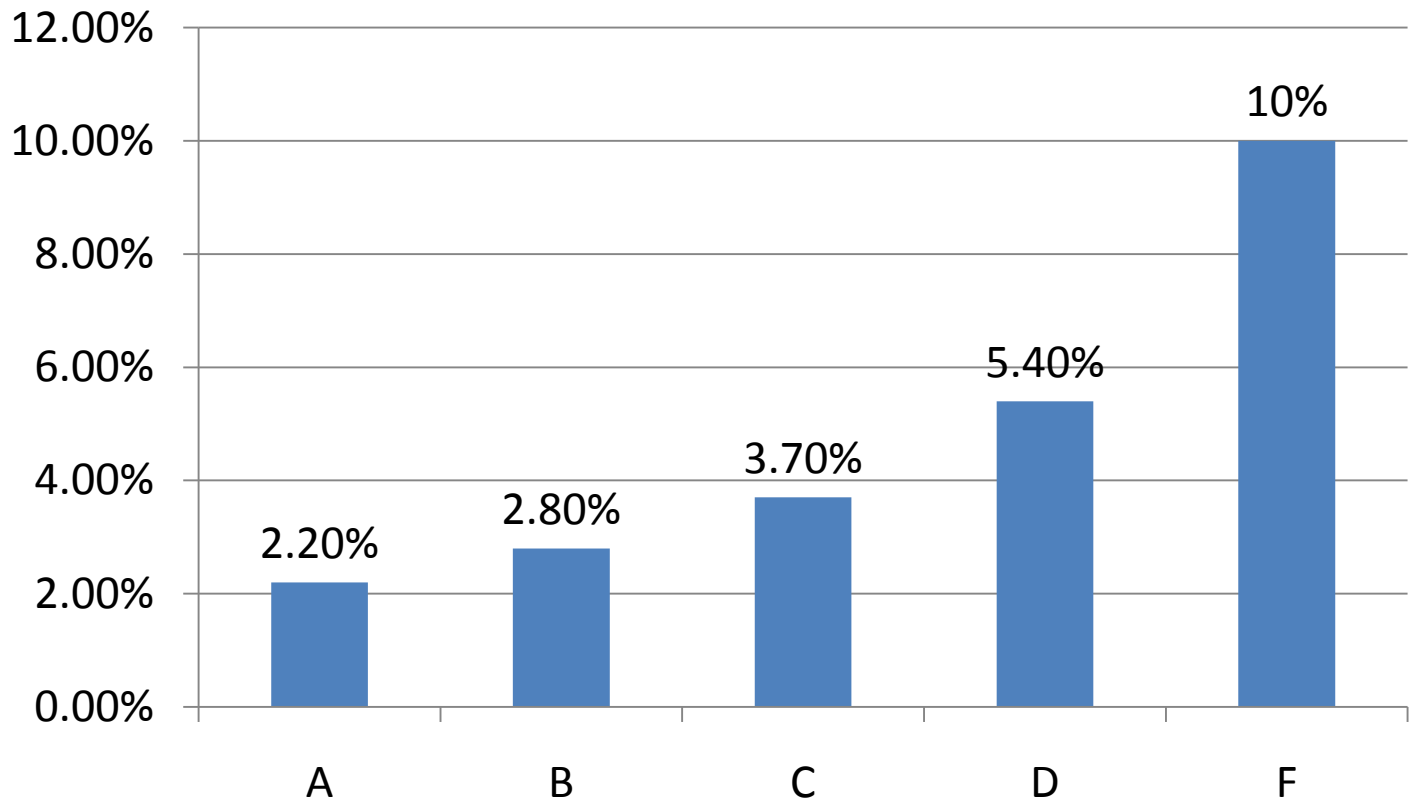




ILLINOIS HIGHER
EDUCATION
C E N T E R

for alcohol, other drug
& violence prevention

Reported Grade and DUI Arrest*

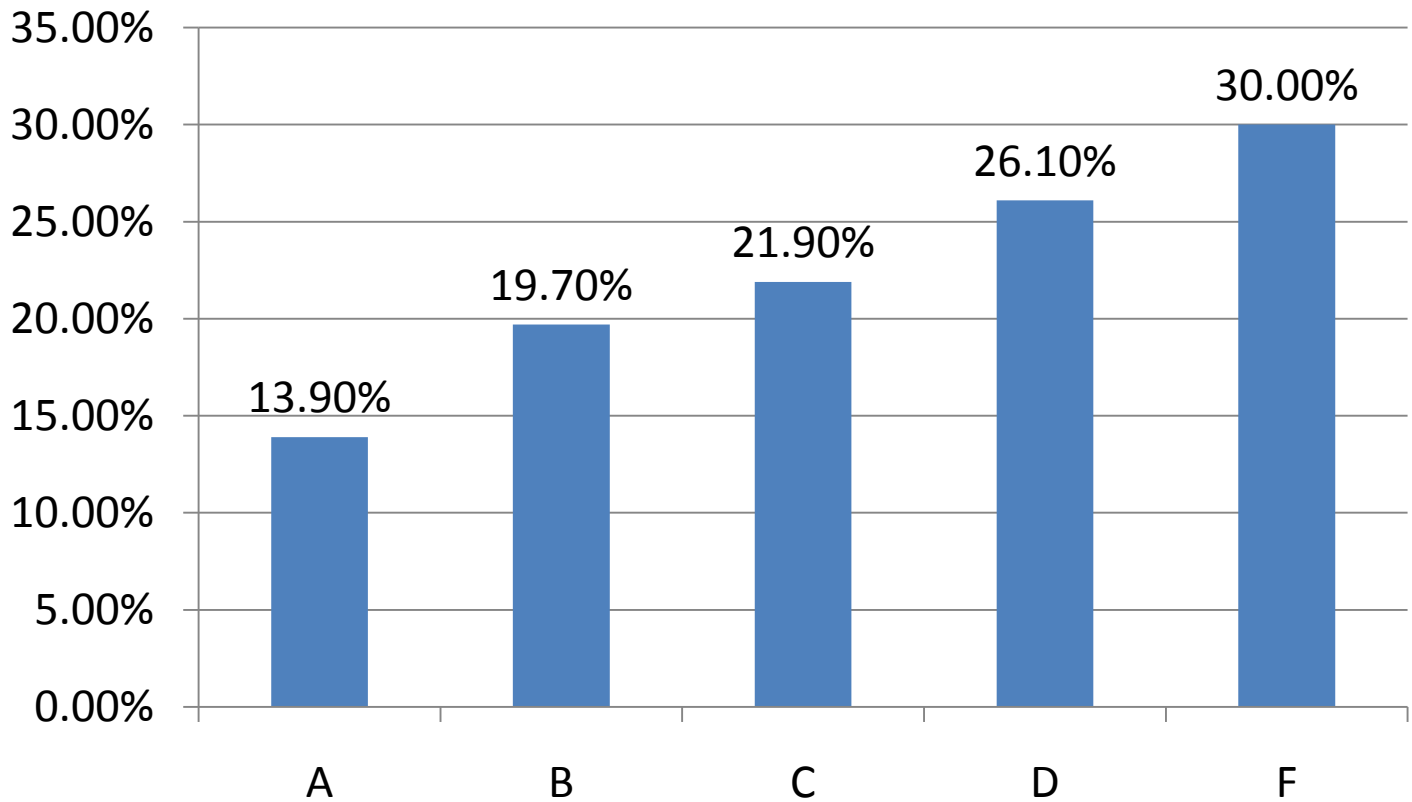




ILLINOIS HIGHER
EDUCATION
C E N T E R

for alcohol, other drug
& violence prevention

Reported Grade and Injury





ILLINOIS HIGHER
EDUCATION
C E N T E R

for alcohol, other drug
& violence prevention

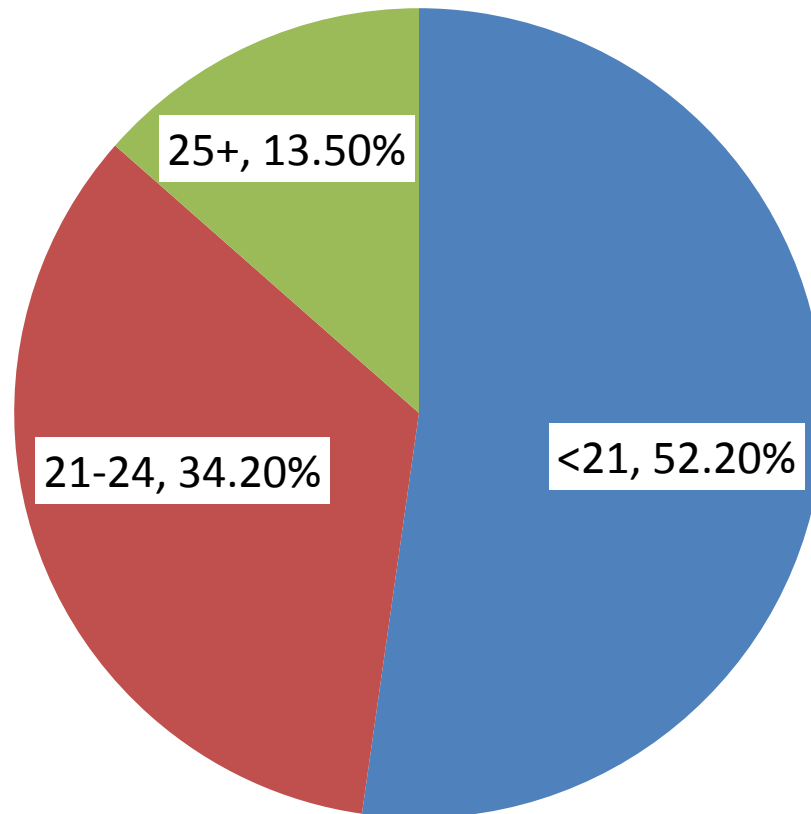
Data Related to Age Grouping and Alcohol



ILLINOIS HIGHER
EDUCATION
C E N T E R

for alcohol, other drug
& violence prevention

Age Grouping

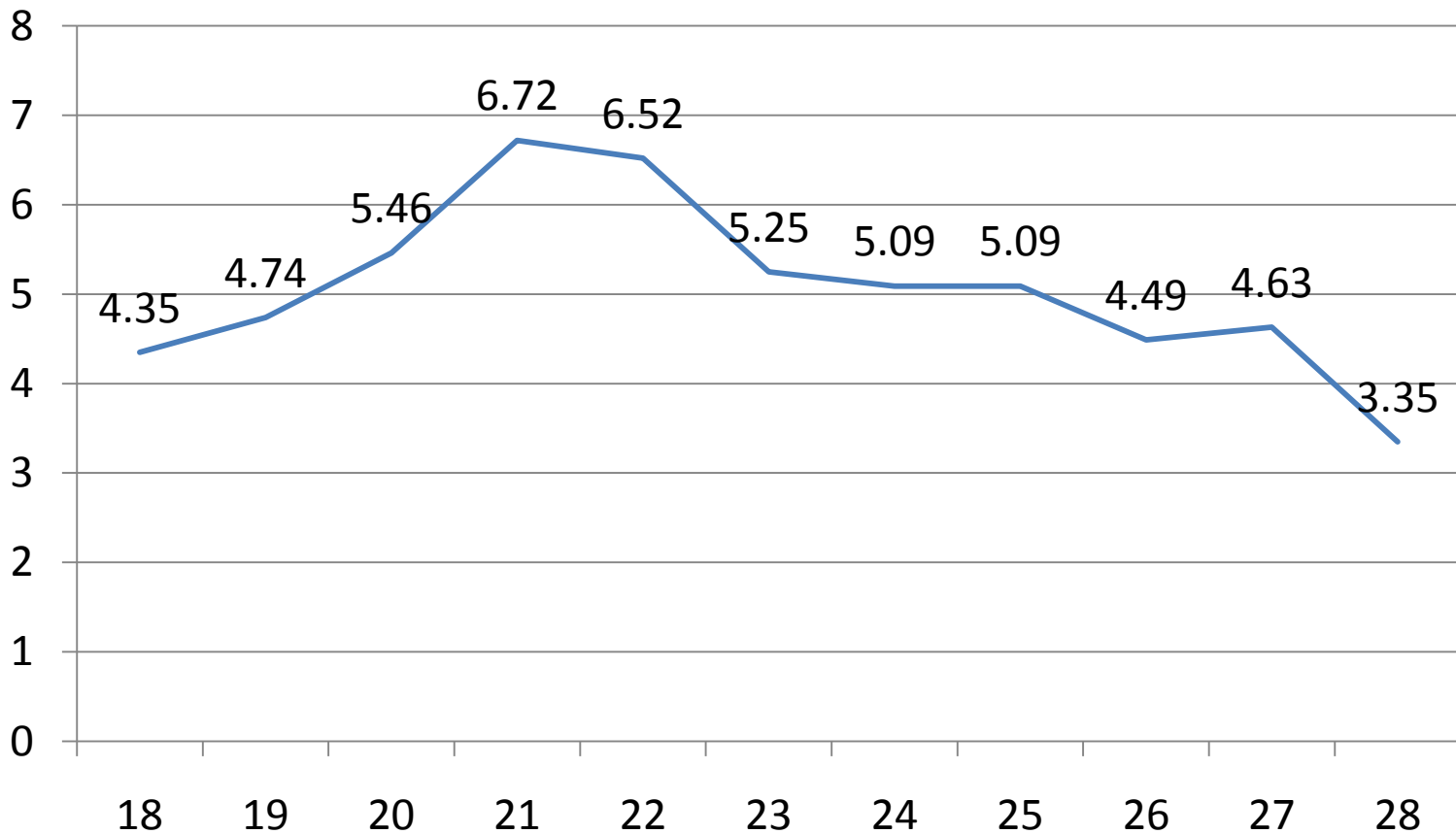




ILLINOIS HIGHER
EDUCATION
C E N T E R

for alcohol, other drug
& violence prevention

Ave. Drinks / Week by Age

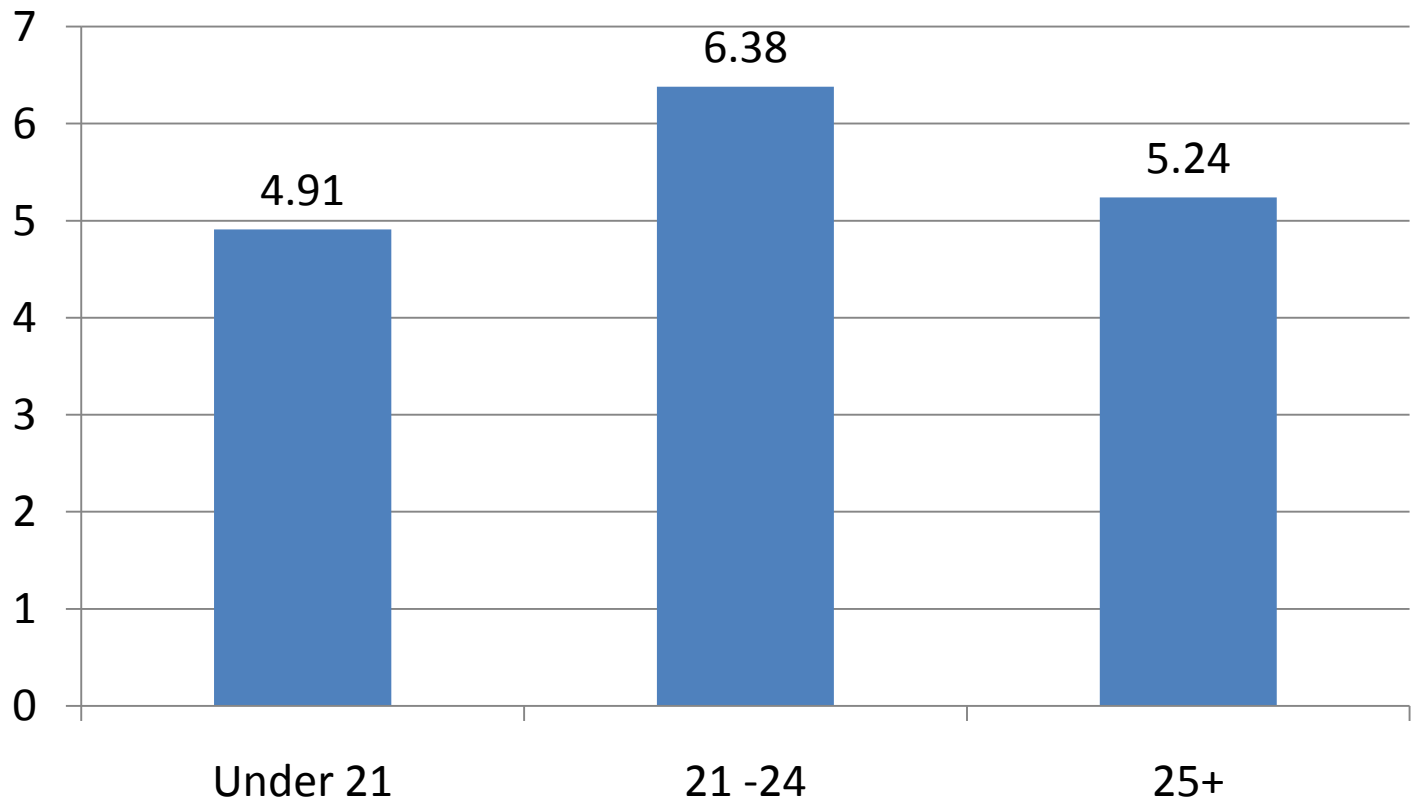




ILLINOIS HIGHER
EDUCATION
CENTER

for alcohol, other drug
& violence prevention

Ave. Drinks / Week by <21, 21-24, & 25+*

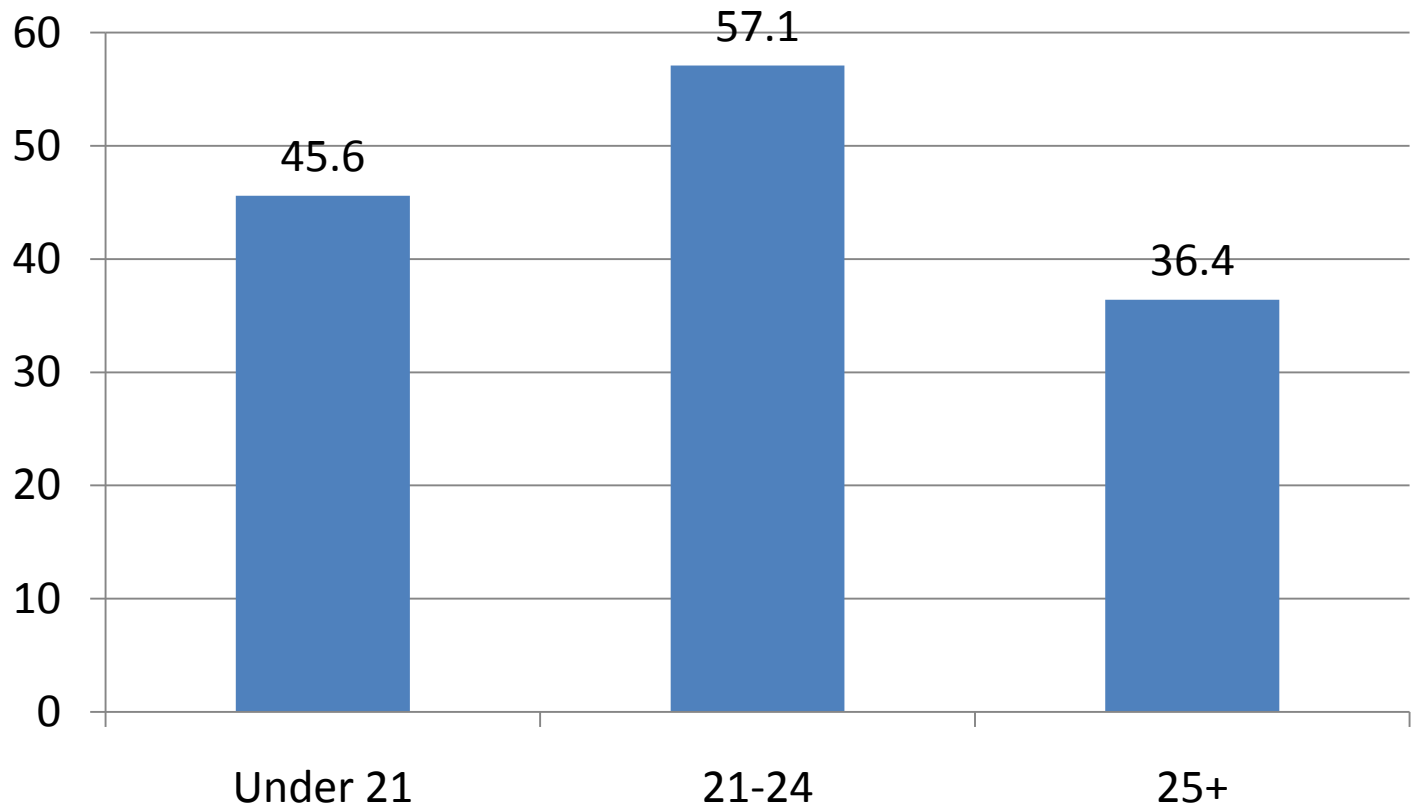




ILLINOIS HIGHER
EDUCATION
CENTER

for alcohol, other drug
& violence prevention

Binge Drinking By Age*

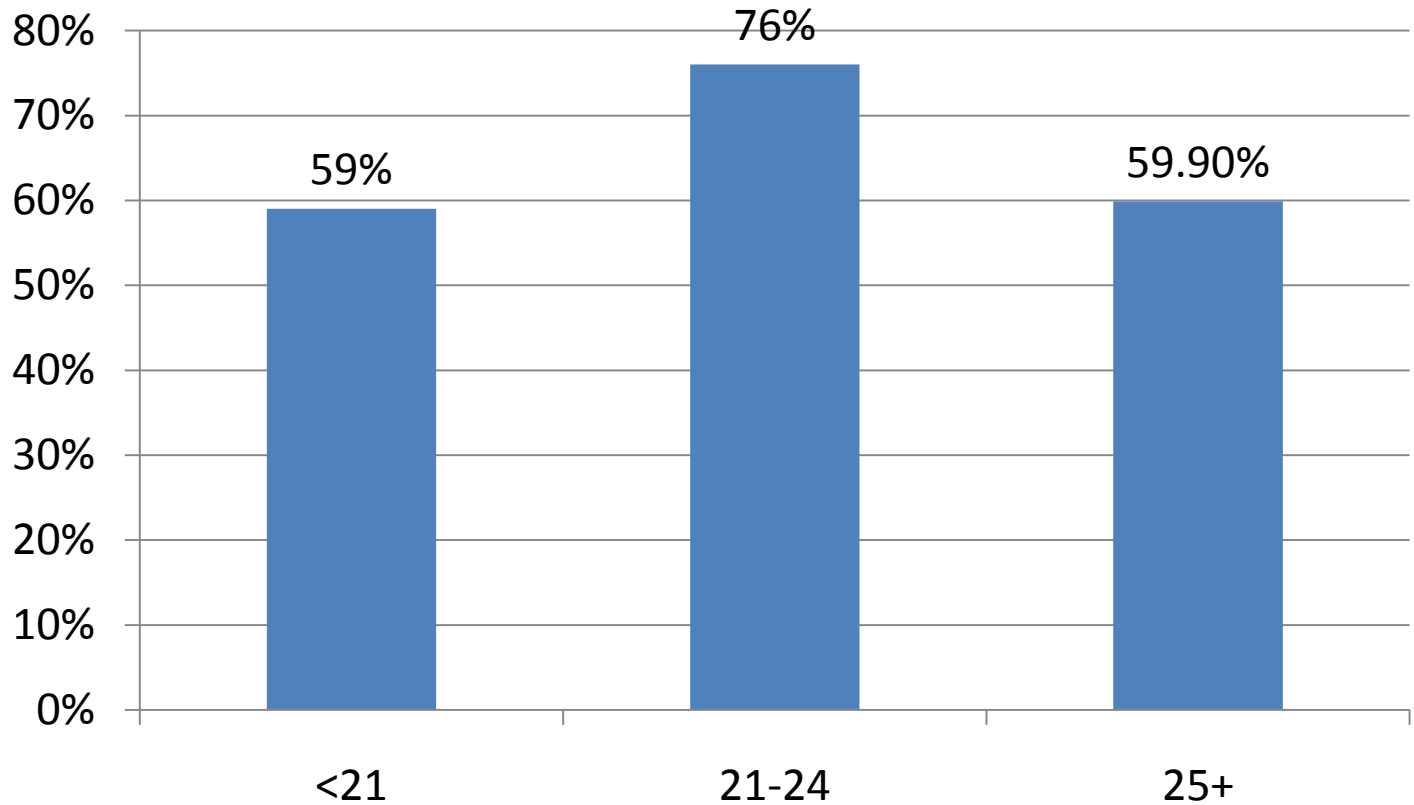




ILLINOIS HIGHER
EDUCATION
C E N T E R

for alcohol, other drug
& violence prevention

Age Grouping & Hangover*

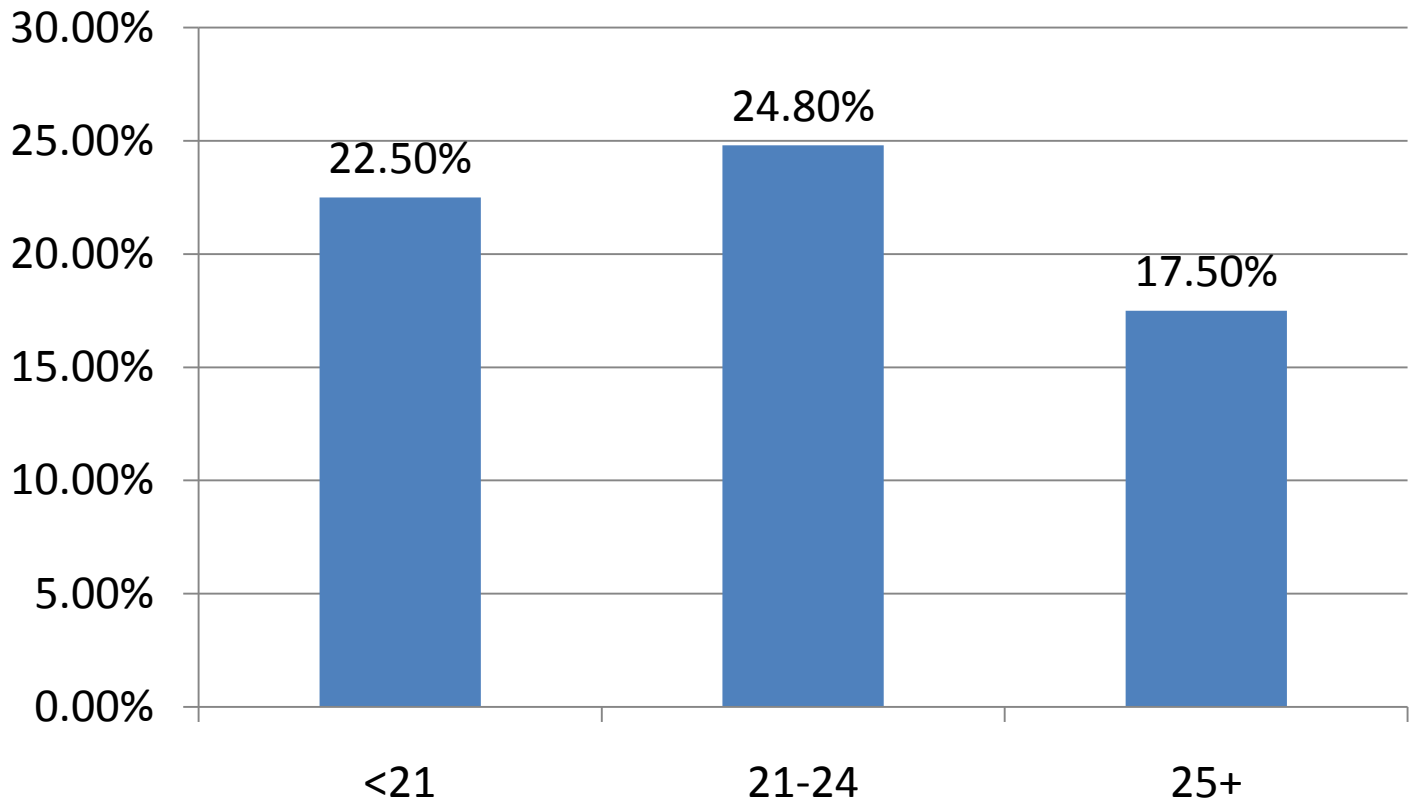




ILLINOIS HIGHER
EDUCATION
C E N T E R

for alcohol, other drug
& violence prevention

Age Grouping & Lower Test Scores*

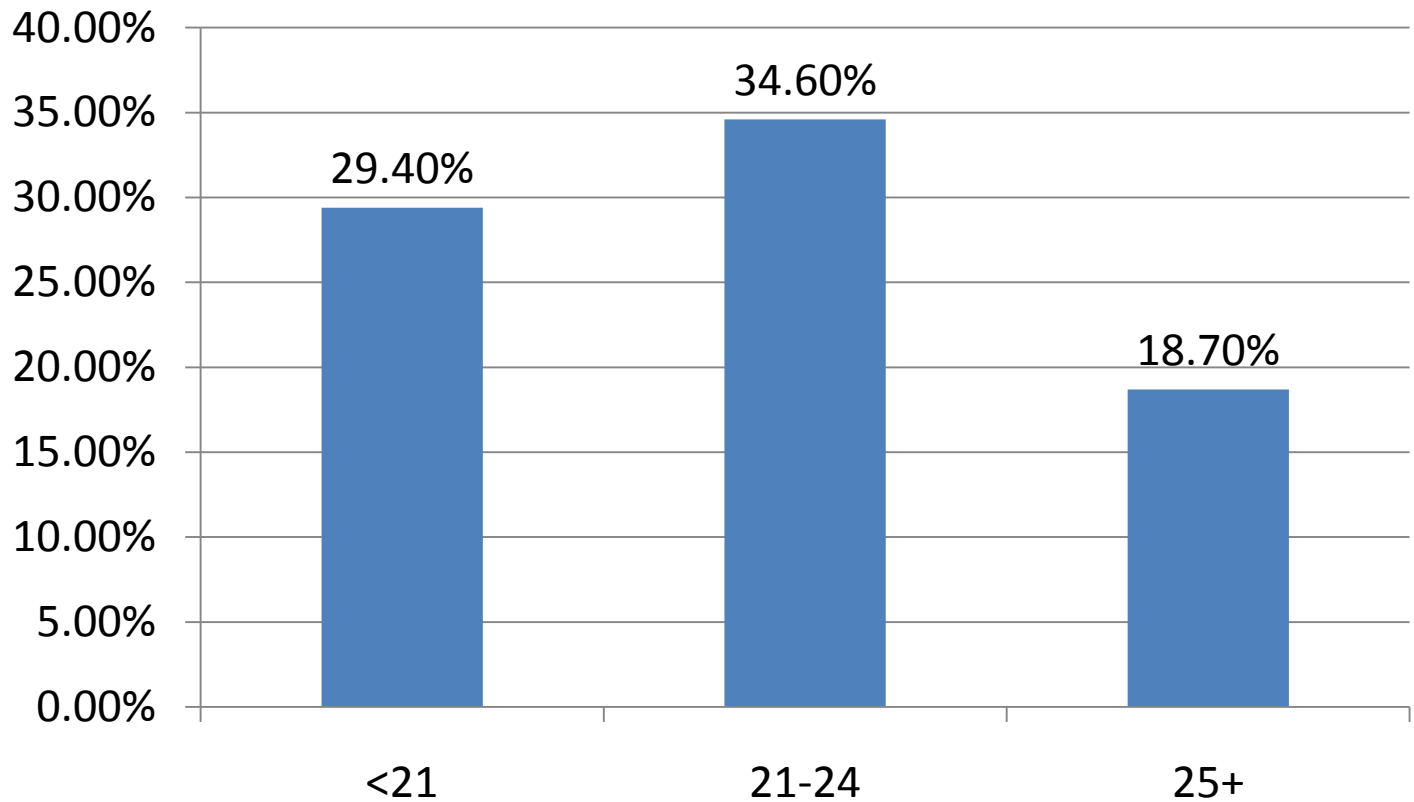




ILLINOIS HIGHER
EDUCATION
C E N T E R

for alcohol, other drug
& violence prevention

Age Grouping & Missed a Class*

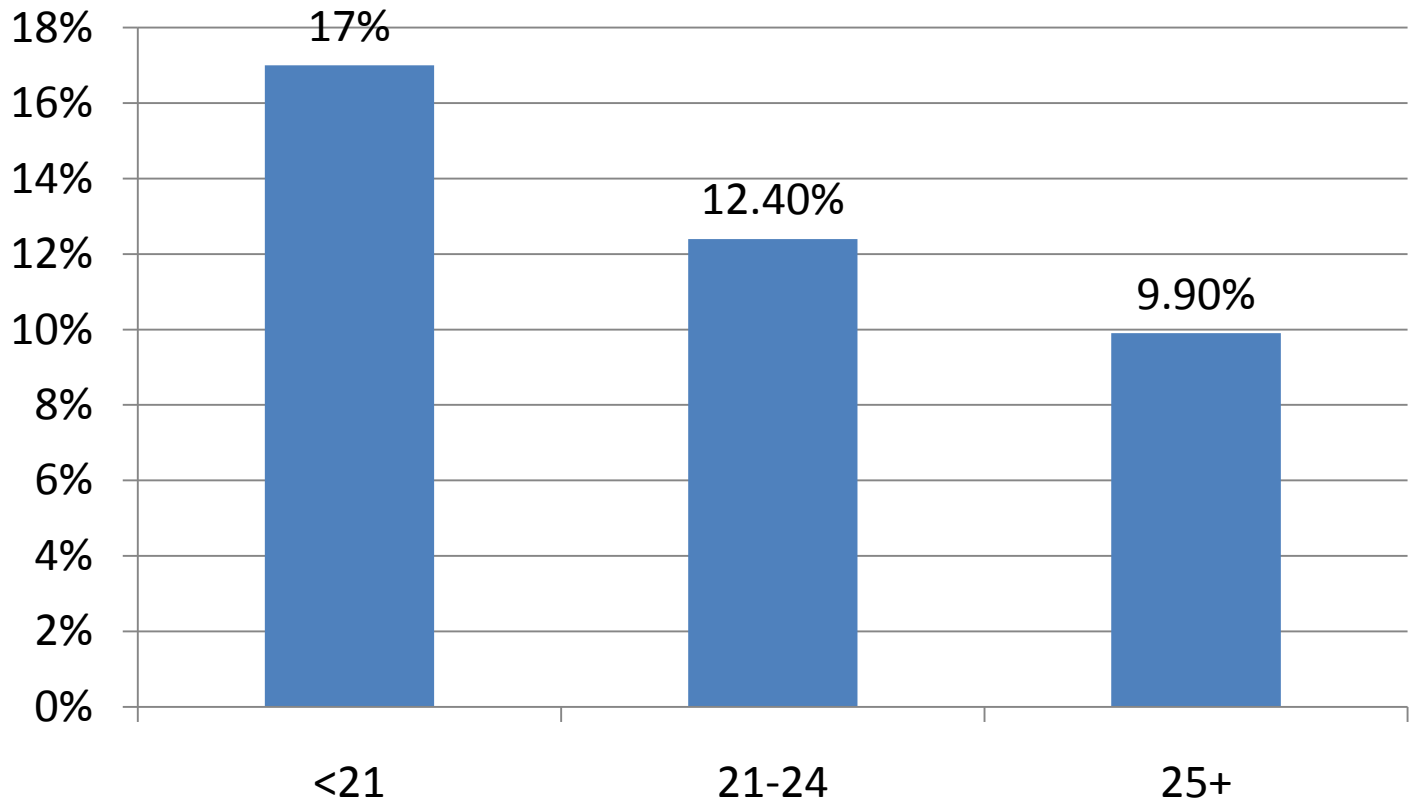




ILLINOIS HIGHER
EDUCATION
CENTER

for alcohol, other drug
& violence prevention

Age Grouping & Trouble with Police*

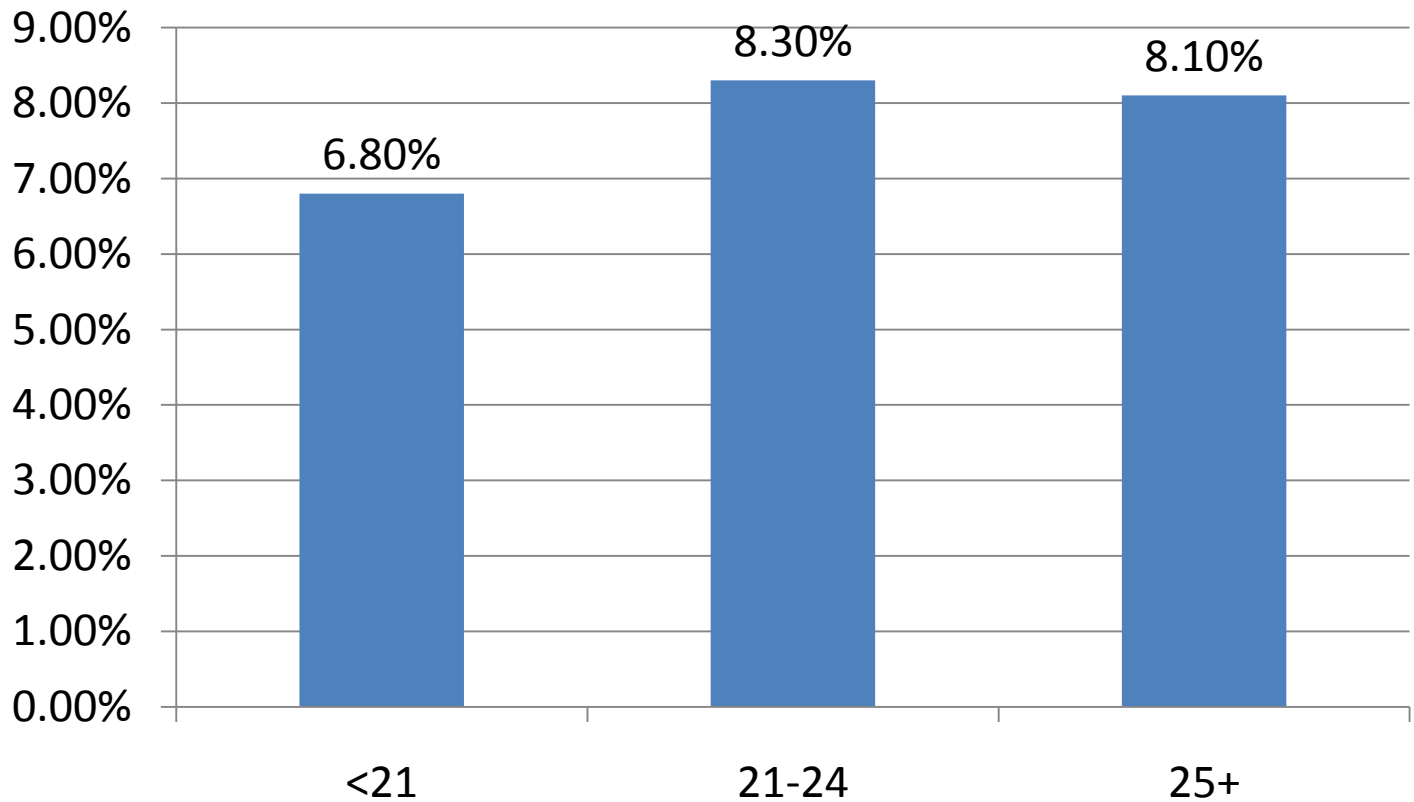




ILLINOIS HIGHER
EDUCATION
C E N T E R

for alcohol, other drug
& violence prevention

Age Grouping & Property Damage*

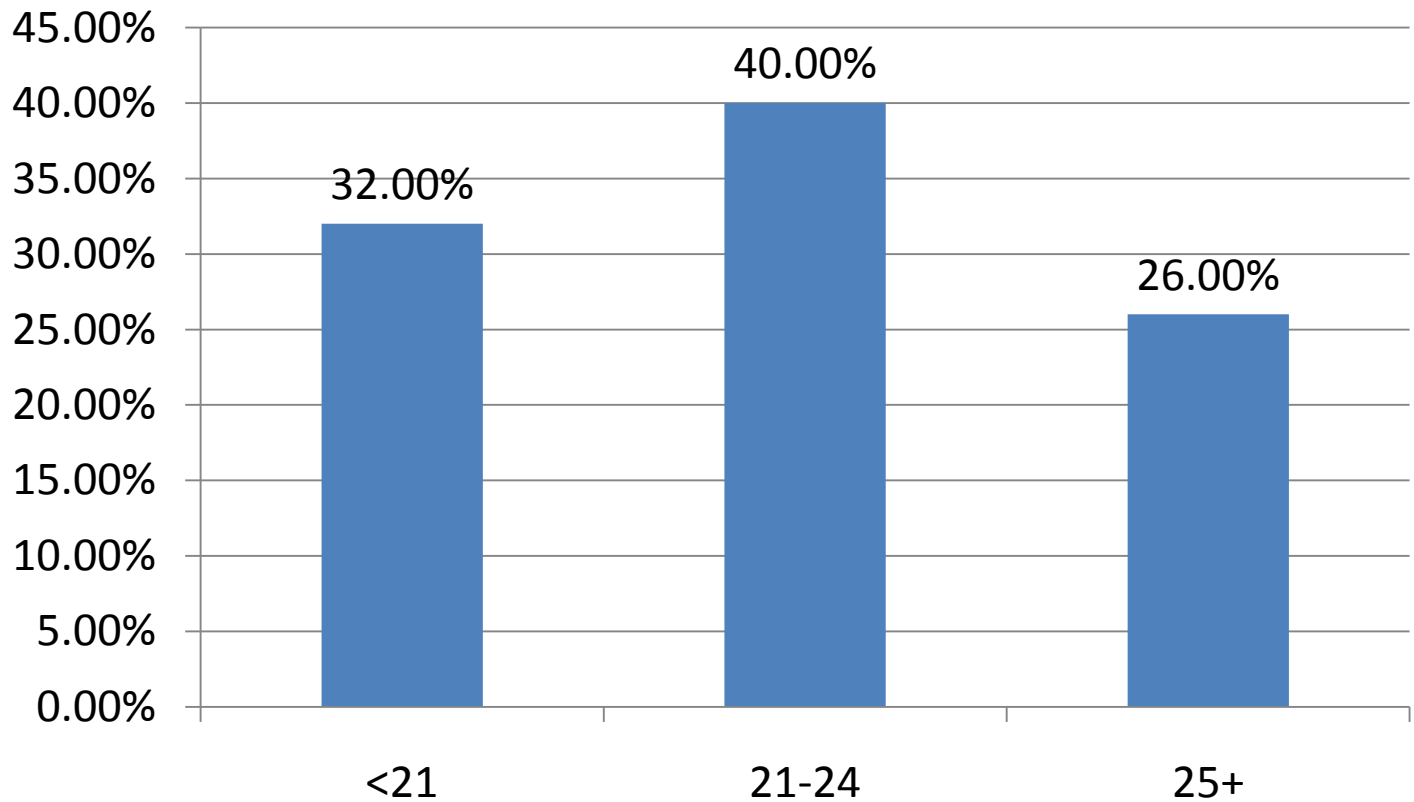




ILLINOIS HIGHER
EDUCATION
C E N T E R

for alcohol, other drug
& violence prevention

Age Grouping & Arguments / Fight*

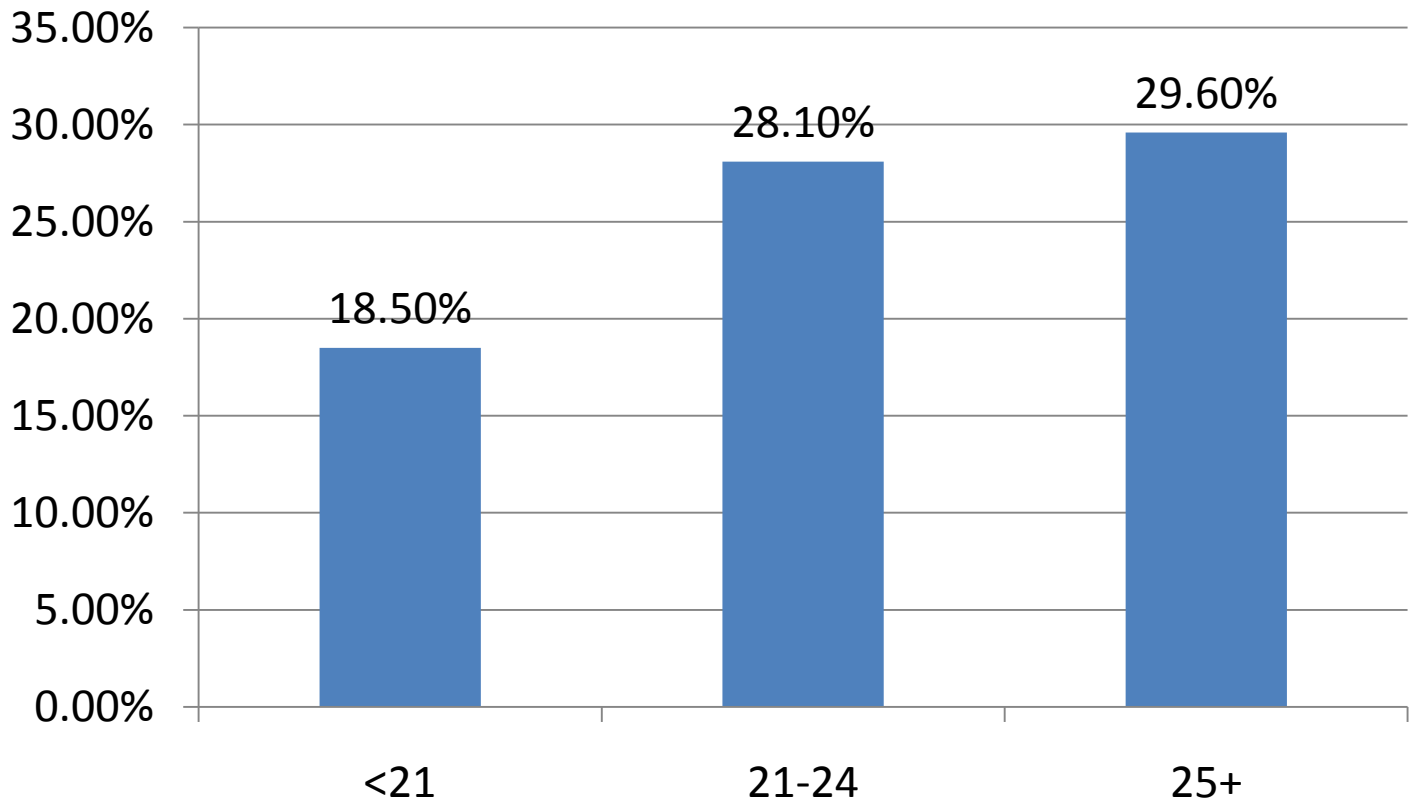




ILLINOIS HIGHER
EDUCATION
C E N T E R

for alcohol, other drug
& violence prevention

Age Grouping & Driving Impaired*

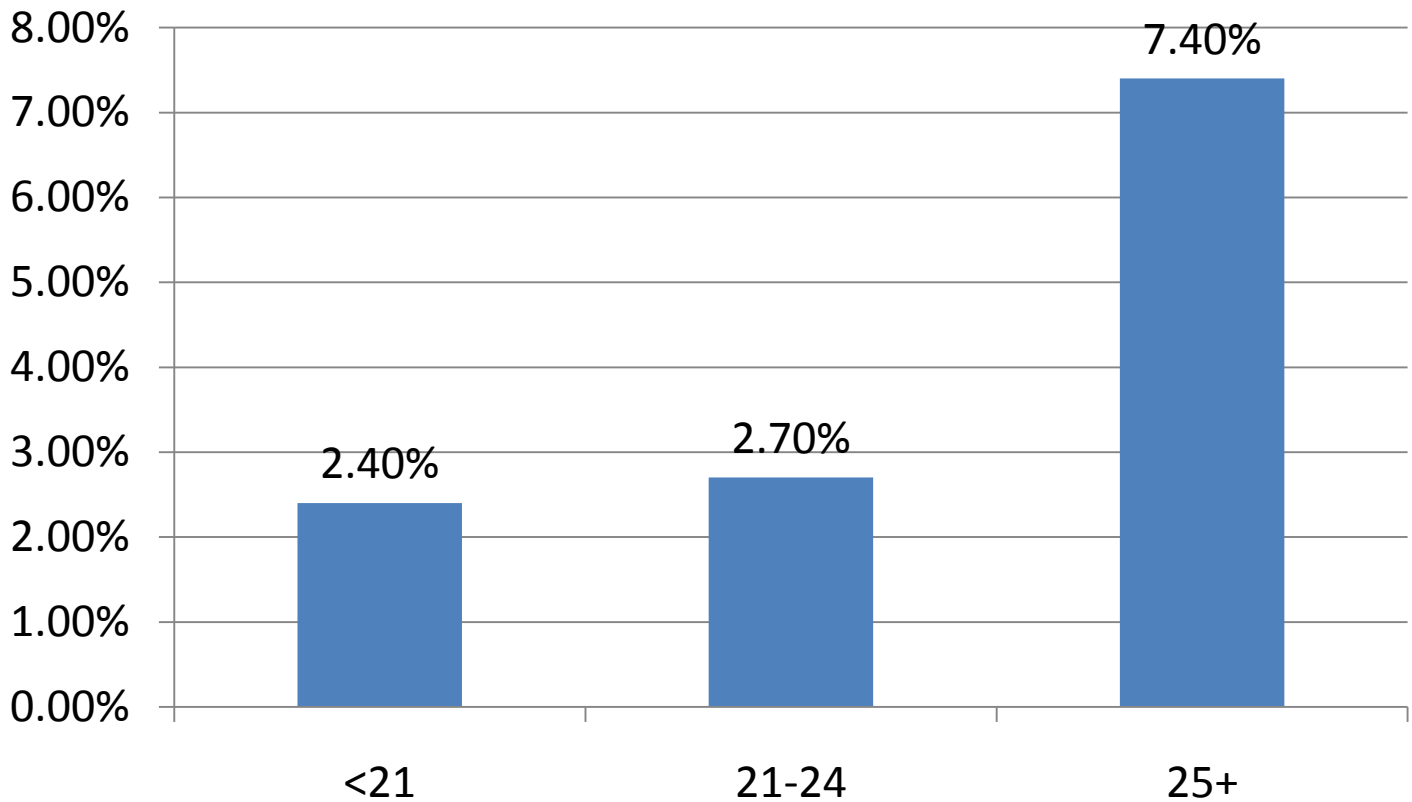




ILLINOIS HIGHER
EDUCATION
C E N T E R

for alcohol, other drug
& violence prevention

Age Grouping & DUI Arrest*

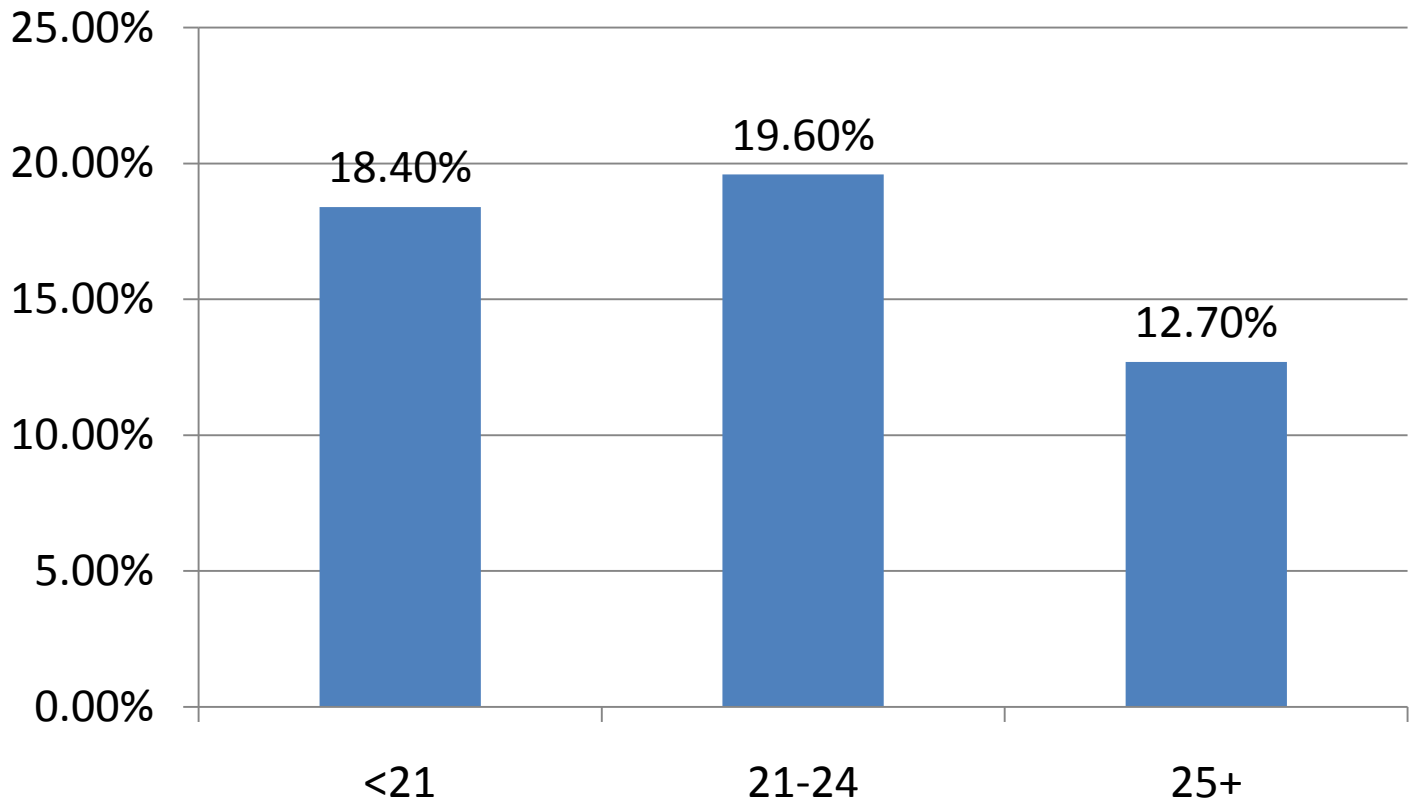




ILLINOIS HIGHER
EDUCATION
C E N T E R

for alcohol, other drug
& violence prevention

Age Grouping & Injury / Hurt*





ILLINOIS HIGHER
EDUCATION
C E N T E R

for alcohol, other drug
& violence prevention

Discussion

- What, if anything, surprised you?
- What are some of the implications of these results?
- What are some of the ways that these results can be used on your campus?