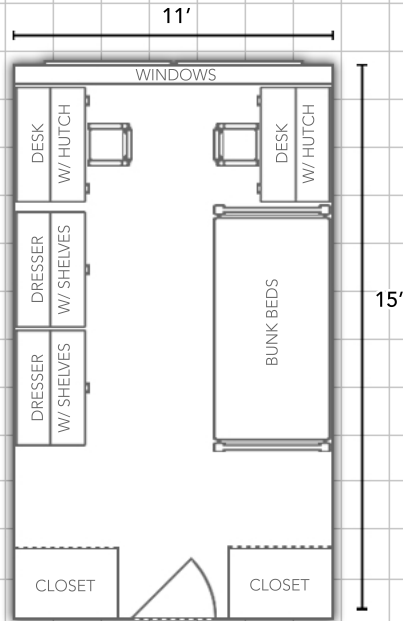


ANDREWS HALL

Information available at WWW.EIU.EDU/HOUSING

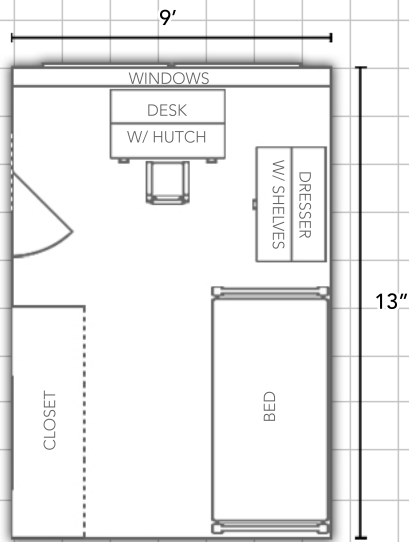


Double Room:



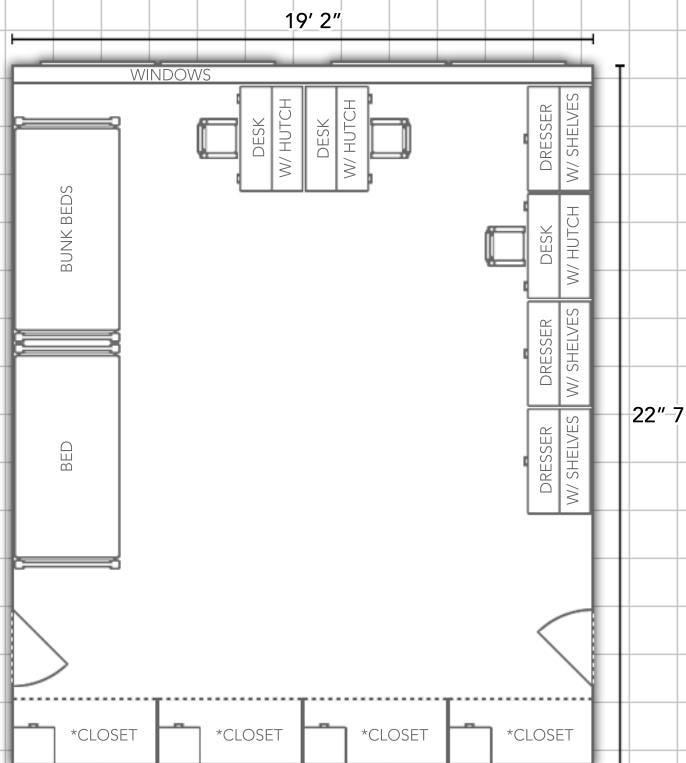
Physical Single Room:

(Rooms 215, 216, 315, 316, 415, 416, 515, 516, 615, 616, 715, 716, 815, 816, 915, 916)



Triple Room:

(Rooms 200, 300, 400, 500, 600, 700, 800, 900)



*Closets include an immovable chest of drawers

Department:

Housing and Dining Services



EASTERN ILLINOIS UNIVERSITY™

Bedding: Bedding in all rooms measure 80" X 39" (x-long twin)

Closets: Closets in rooms 917-930 include immovable chest of drawers

Furnishings: Rooms feature stackable, loftable, and bunkable furniture

All rooms are carpeted

Miscellaneous: *Layouts are not to scale*